



Total Spend Management Solutions From Amerinet

- ▶ Savings opportunity identification
- ▶ Clinical and operational benchmarking
- ▶ Competitive portfolio
- ▶ Data integrity and price accuracy
- ▶ Educational opportunities

provides a pathway to help you improve

and in its delivery of products, services,
maximizing your financial performance.

www.amerinet-gpo.com or call Amerinet's

Amerinet[®]
Delivering a Network of Solutions™

877-711-5600 ■ www.amerinet-gpo.com

ElderCare

- LAW -

Are Children Responsible to Support Their Parents?

We all have reasons for putting off our own estate planning. Hectic schedules, fear of attorneys' fees and superstition over what might happen if we actually have our affairs in order before a crisis situation presents itself are just a few common excuses. While not persuasive, such alibis prevent us from planning for the needs of ourselves and our families during lifetime and after death, which can, and often does, result in a myriad of legal problems down the road.

However, a relatively new law enacted in Pennsylvania in July 2005 might just motivate you to investigate your options sooner and assemble a family estate plan. Generally, an estate plan focuses on a person's issues regarding taxes, assets and the succession of wealth to future generations. However, PA Act 43 may not affect your estate plan directly because this law is geared toward the support of another. Slowly, the effects of Act 43 are beginning to creep across the Commonwealth, arriving to a family near you soon. Yes, I am talking about a law that has the authority to make children responsi-



BY JULIAN E. GRAY

ble to pay for the support of their parents.

The operative language in Section 4603 of the Act provides that "all of the following individuals have the responsibility to care for and maintain or financially assist an indigent person regardless of whether the indigent person is a public charge":

- (i) The spouse of the indigent person.
- (ii) The child of the indigent person.
- (iii) The parent of the indigent person.

On its face, this language may imply that we all have the obligation to support our spouses, children and parents. However, there are various interpretations of key words in the Act and case law in Pennsylvania which make the law and its possible enforcement confusing. For example, the term "indigent" is not specifically defined under the Act. In other words, it is difficult to utilize a black and white test to determine indigency. Another interesting aspect of the Act is that the indigent person does not have to be a "public charge", or in other words, on welfare to require a support obligation. While Pennsylvania has recog-

nized spousal support obligations for years, Act 43 appears to extend this support obligation to other family members.

There are two limited defenses for this support obligation under the statute: (1) if the individual does not have sufficient financial ability to support the indigent person; and (2) a child shall not be liable for support of a parent who abandoned the child and persisted in the abandonment for a period of ten years during the child's minority. The first exception has no financial guidelines under the statute to be able to determine if the individual does in fact have sufficient financial ability to provide the support. The second exception is of limited use for most families and is the exception, not the normal situation.

There are several unresolved issues with Act 43. First, bear in mind that this is a law enacted by the Commonwealth of Pennsylvania. Therefore, it would appear to be limited to obligating support against residents of the Commonwealth. So does that mean we should all move out of the state or look beyond our state borders for nice retirement homes for our parents? Second, it appears that since the statute gives no financial support guidelines, the determination of a support obligation of a family member will

have to be determined on a case by case basis.

Act 43 appears to contradict the common notion that once a minor turns 18 years old and is emancipated, the financial ties for support between parent and child are severed. With this new Act, families need to rethink the possible ramifications of a child or parent who needs significant health care support or daily living expenses. This requires an intergenerational discussion among families to plan ahead for the costs of retirement, including nursing home care, which costs can devastate the best laid plans in a short time. While it is unnatural for us to discuss financial matters with our parents, being the "greatest generation" and wanting us to mind our own business, planning ahead now could avoid significant financial burden in the future for all those concerned. Act 43 might just be the motivation we all need to stop putting off our estate plan and be proactive about these issues.

Julian E. Gray is a Certified Elder Law Attorney and shareholder with Springer Bush & Perry P.C. concentrating in Elder Law. He can be reached at (412) 269-4200 or via email at jgray@springerlaw.com. Copyright 2007 Julian E. Gray

The Trusted Source Of Home Care For Older Adults



- Personal Care
- Medication Reminders
- Meal Preparation
- Light Housekeeping
- Shopping & Transportation

Home Instead
SENIOR CARE®

With a little help from a friend.

Short-term or long-term assistance in any residential setting

Call Toll Free 1-866-245-1106

Eight Local Offices To Serve You

in Greater Pittsburgh

Each Home Instead Senior Care franchise office is independently owned and operated.

homeinstead.com

There are options for those with a life limiting illness...



Consider Gateway Health... We listen and respond.
1-877-878-2244

Today, too many Americans die alone. Most people do not want to die by themselves in a cold, impersonal environment, hooked up to machines and cut off from family and friends. Instead they prefer to spend their last days at home, when and where they want, with the people they love. Gateway can provide peace of mind and service that allows the family to provide ongoing support and love.

Gateway Hospice makes this possible by:

- 24 hour 7 day week availability
- Medicare certified hospice services. Financial assistance is available for eligible patients.
- Care is provided wherever the individual "calls home" in Allegheny and all surrounding counties.
- Ongoing education and resources regarding end of life issues and hospice services.
- The frequency and length of care visits are flexible, and are determined by the needs of the patient and family.
- Clinical assessment and interventions for pain and symptom management.
- Bereavement services for family and friends.
- Spiritual and emotional support.
- Volunteer services including visits, respite, pet, music, therapies.
- Specialized services available in Skilled Nursing and Assisted Living facilities.

Enhancing Life

GATEWAY
HEALTH

For more information, please call: 1-877-878-2244



University of Pittsburgh School of Nursing Ranked 7th Overall

In the 2008 edition of *U.S. News & World Report's America's Best Graduate Schools*

Several nursing specialties also ranked in the top 10:

- Anesthesia 5th
- CNS Psychiatric/ Mental Health..... 6th
- Pediatric NP 6th
- Adult NP 9th



University of Pittsburgh
School of Nursing

Advancing the Science and Practice of Nursing

412-624-4098

www.nursing.pitt.edu

The Journey to Improve Hospice Care in America

In the past, most hospices grew slowly through word of mouth and community outreach. Today, many hospices have begun to realize that the use of traditional marketing tools and their results are not antagonistic to the goals and values of a non-profit organization.

Hospices, like all organizations and businesses, market to consumers with the desire to increase patient volume, grow their market share, and assure their survival in a competitive market. Many of the key reasons hospices continue to engage in marketing harkens back to the objectives of the original hospice movement:

EDUCATION - For most hospices, educating professional referral sources and lay people about the benefits of hospice care and end-of-life issues, is, in itself, a goal. The better people understand hospice as an option on the health care continuum, the more willing they are to choose it as an option in their health care. Family Hospice and Palliative Care's new Center for Compassionate Care will support this goal by making education a major component of its services.

PATIENT ACCESS - Hospice professionals want hospice and palliative care to be available and accessible to all who need it. One way of achieving this is by making sure that patients and families know that their options include hospice and palliative care.

VOLUNTEERS - Volunteers are vital to the success of a hospice. Many hospices will need to "market" in the community to recruit volunteers. This is especially vital as hospices move into new geographic locations.

FUNDING - Many non-profits, including hospices, focus their marketing efforts towards funding sources. They are looking to "market" themselves as the best



BY RAFAEL J. SCIULLO,
MA, LCSW, MS

steward of the funds. In addition, since most non-profits depend on donations, hospices are also "marketing" to potential and existing individual donors.

Most importantly, hospices should not shy away from the use of major marketing tools. These tools, although traditionally part of the for-profit world, are very useful in helping to execute the hospice's stated mission. Market analysis may help a hospice to increase referrals and volume,

while also providing information about how well it is meeting the needs of a community. In turn, the hospice can use this information to better serve its patients, families, and referral sources.

Branding and logo development are other examples of useful marketing tools. Branding can help a hospice identify more specifically its goals and image and put its entire staff on the same page. Developing a logo that reflects the mission of an organization is important to its relationship to the community and those it serves.

Finally, the information gathered through market research can help hospices to identify underserved geographic areas and underserved populations. Family Hospice and Palliative Care's expansion into the counties surrounding Allegheny County was prompted by the lack of hospice services being offered in many of those areas.

Over time, hospices must learn to use modern marketing tools to achieve their own unique and specialized outcomes. Marketing and hospice care may seem incongruous but to the contrary, marketing can help a hospice reach its desired goal of providing compassionate and comfort care to those who need it.

Rafael J. Sciuлло, MA, LCSW, MS, is President and CEO of Family Hospice and Palliative Care. He may be reached at rsciuлло@familyhospice.com or at (412) 572-8800.

----- Celebrating 18 Years of Service -----



CANCER CARING CENTER

you don't have to confront cancer alone.

call for support
412 622 1212



CANCER CARING CENTER

ALL SERVICES ARE FREE

We are a nonprofit organization dedicated to helping people diagnosed with cancer, their families and friends cope with the emotional impact of cancer.



Services provided:

- Professional Counseling
- Telephone Helpline
- Support Groups in 15 Locations
- Live Well with Cancer Programs and Newsletters
- Resource Library
- Age-Specific Groups for Children Who Have A Family Member With Cancer
- Bereavement Groups for Children
- Dance, Wellness, Art Programs and more

Our services are not duplicated and all are FREE

Community Support Groups:

- Armstrong
- Bloomfield
- Butler
- Cranberry
- Friendship
- Homewood
- Jefferson
- Johnstown
- McKeesport
- Monroeville
- North Hills
- Ohio Valley
- Shadyside
- South Hills
- Murrysville

4117 Liberty Avenue • Pittsburgh, PA 15224

E-MAIL: info@cancercaring.org

WEB SITE: www.cancercaring.org

We are a local charity – all funds raised stay here to help our neighbors in Western Pennsylvania.



Forbes Avenue Suites

3401 Forbes Avenue • Pittsburgh, PA 15213

412-325-3900 • 877-335-3900

www.forbesavesuites.net



- Spacious, Luxury 1, 2 & 3 Bedroom Suites
- Daily, Weekly, Monthly rates
- In the Heart of Oakland, walk to Pitt & all major Universities and Hospitals, minutes to downtown
- Smoke free, fully equipped, parking, full amenities

Forbes Avenue Suites has been specifically designed to meet the needs of Hospital, University and Business visitors requiring an affordable deluxe short or long term stay facility. Forbes Avenue Suites is the perfect solution for those looking for more than just a hotel room.



- Special Hospital, University and CORPORATE DISCOUNTS available.

- 20% DISCOUNT for family members of hospital patients.



Print & Design Services

- PUBLICATIONS AND REPORTS • FLYERS • NEWSLETTERS
- LOGOS • BUSINESS CARDS • ADVERTISEMENTS • PRINT MANAGEMENT SERVICES

Single, competitive hassle free source for all your print requirements.
Experienced and talented team of designers
We work with a number of vendors to ensure competitive prices, quality and fast turnaround.

Call 412-835-5796 for a quote today or e-mail jmcgraphicsprint@aol.com
JMC PUBLICATIONS, PRINTING, GRAPHICS & DESIGN

Hospital Security Awards Judging Panel Announced

Panelists include representation from both security and healthcare management fields.

The judging panel for the 2007 Hospital Security Awards has been announced. The program, being conducted by Vector Security in cooperation with Hospital News of Western Pennsylvania, will honor the performance of regional healthcare security staffs with awards presented in February of 2008.

The awards program will feature four individual awards, as follows:

1. Healthcare Security Executive, Director or Manager of the Year
2. Healthcare Security Department of the Year
3. Healthcare Security Officer or Staff Member of the Year
4. Healthcare Security Best Practice of the Year

The judging panel is comprised of representatives from both security and healthcare management fields, and we're pleased to introduce them to you...

STEVE WILDER: President, COO and founding partner of Sorenson, Wilder & Associates, a nationally recognized leader in healthcare security management consulting services.

Mr. Wilder has spent the past 27 years in healthcare safety, security and risk management in both hospitals and long-term care facilities. During his career, he has held positions as Director of Risk Management, Corporate Director of Safety and Facility Management, and Corporate Director of Safety and Security. Additionally, Mr. Wilder has served as a hospital administrator of an ambulatory and surgical treatment facility. Mr. Wilder has also developed compliance programs in Safety, Fire Prevention, Hazardous Materials, Security, Utility Management, Equipment Management and the Emergency Preparedness sections of the JCAHO Environment of Care manual.



**SORENSEN
& WILDER**
Associates
Specialists in Safety & Security Solutions

FREDERICK V. PETERSON: Vice President, Professional Services and Disaster Preparedness, for the Hospital Council of Western Pennsylvania.

Mr. Peterson is Vice President of Professional Services and Disaster Preparedness for the Hospital Council of Western Pennsylvania, where he directs the Stewardship Academy for hospital trustees and senior management, as well as produces professional programs for Hospital Council's education services division. Peterson holds a master's degree in public health from the Yale University School of Medicine and a bachelor's degree in sociology and education from Tufts University. Peterson has published several articles on emergency topics and speaks frequently to a variety of audiences on emergency preparedness, disaster planning and other subjects related to bioterrorism.



**HOSPITAL
COUNCIL of
WESTERN
PENNSYLVANIA**

The HCWP is a regional trade association representing a continuum of healthcare providers including hospitals, long-term care facilities, long-term acute care providers, and specialty hospitals within a 30 county area. The Hospital Council provides its members with expertise in hospital operations, management, finance, government relations, communications, disaster and emergency preparedness, grant funding, clinical operations, health information management, business development, reimbursement and governance.

JOSEPH BELLINO: Director of Safety, Security and Emergency Management, Hanover Hospital, Hanover, PA; and Vice President-Treasurer of the International Association for Healthcare Security & Safety (IAHSS)

Mr. Bellino, CHPA, HEM is currently Director of Safety, Security and Emergency Management at Hanover Hospital. Prior to joining Hanover Hospital, he served in various healthcare organizations in management capacities, 15 years' experience to date. Mr. Bellino is credentialed by IAHSS as Certified Healthcare Protection Administrator; Center for Healthcare Environmental Management as a Healthcare Environmental Manager; and by the Crisis Prevention Institute as an instructor in Nonviolent Crisis Intervention. He possesses a Bachelor of Science in Human Services from Thomas A. Edison State College, and is currently attending graduate courses at



McDaniel College.

The IAHSS is the only organization dedicated solely to serving the needs of professionals who manage and direct security and safety programs in healthcare institutions. Formed in 1968, its current membership roster of over 1,600 have joined together to develop educational and credentialing programs. IAHSS has also published a series of training manuals and studies that help prepare security officers and others to meet the security needs of healthcare institutions, including Certified Healthcare Professional Administrator (CHPA) accreditation. To date, over 20,000 individuals have successfully achieved certification since the inception of the program.



KAREN HARTMAN: President, Corazon, Inc, a recognized leader in strategic heart and vascular program development, and President of the American College of Healthcare Executives Western Pennsylvania Chapter:

Ms. Hartman is President of Corazon Inc., a recognized leader in strategic cardiovascular program development, assisting clients through the full spectrum of consulting and recruitment services from feasibility study and business planning through clinical readiness and all facets of a successful implementation, including executive search for key cardiovascular service line leaders. She has firsthand knowledge of fiscal operations and reporting, hospital and physician billing, and statistical analysis. Ms. Hartman has been in cardiovascular consulting for the past seven years.

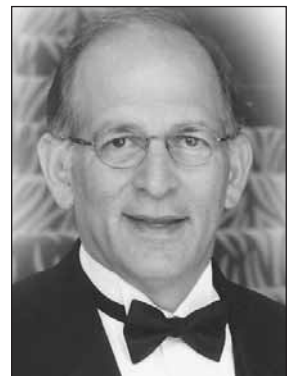


Prior to joining Corazon, she was an HR Administrator at Allegheny General Hospital and worked in both hospital and physician finance for The Mercy Hospital of Pittsburgh. Ms. Hartman is an active member of the Healthcare Financial Management Association (HFMA) and American College of Healthcare Executives (ACHE). She earned her Bachelor's of Science Degree in Administration and Management cum laude from La Roche College in Pittsburgh.

CORAZON
The Heart Experts

HARVEY KART: Publisher, Western Pennsylvania Hospital News

Mr. Kart is a graduate of Youngstown State University and a former Pittsburgh Public School teacher. He is the publisher of Western Pennsylvania Hospital News and founder of three additional healthcare publications, Chicago Hospital News, Atlanta Hospital News and South Florida Hospital News. Western Pennsylvania Hospital News is Western PA's only monthly healthcare newsletter which reaches more than 30,000 healthcare professionals each month. The publication's number one goal is to produce top quality healthcare-centric journalism, written and edited specifically for Western PA healthcare professionals.



**Western Pennsylvania
Hospital News**
THE REGION'S MONTHLY HEALTHCARE NEWSPAPER

Any healthcare security department wishing to submit an application for any of the four individual awards can do so in the following manner:

A) All security directors or managers in charge of safety and security functions at the Western Pennsylvania, Eastern Ohio or Northern West Virginia healthcare facilities which make up the subscription base of Hospital News of Western Pennsylvania should have received a pre-submission application during the week of June 11th. If you did NOT receive an application and would like to be included in the awards program, please contact Larry Shoop at (724) 779-8800, ext. 1223, or by email at SecurityAwards@vectorsecurity.com.

B) The pre-submission application advises us that your facility intends to submit a final application for one or more of the four available awards. The pre-submission application should be submitted no later than July 1, 2007.

C) Final application(s) for the awards program must be received by December 3, 2007. This date allows submitters to assemble the best possible application from any event or action witnessed during 2007.

If you have any further questions pertaining to this awards program, please feel free to contact Mr. Shoop.



EDUCATION

Congratulations to MHA Graduates of Class 2005-07

BY SARA BARADA

On April 28th, graduating students, faculty, and alumni of the Graduate School of Public Health, University of Pittsburgh, attended the GSPH Convocation at the IBEW

Hall, South Side and the Alumni Dinner at the Pittsburgh Athletic Association to celebrate the graduation of the students of class 2007. University commencement took place the following day, April 29, at the Petersen Center. Prior to the school wide ceremonies, the Department of Health Policy and Management (HPM) at GSPH prepared a lunch to honor the 12 Master of Health Administration students who were anticipating graduation. The graduating students, faculty, and other students attended the event to celebrate with the graduates the beginning of their prominent career in the field of health policy and management.

Among the graduates is Erik Frazier, 23, from Allentown, PA. Erik did his undergraduate major in Biomedical Engineering and has been working as a student researcher in the field of Biomechanics/Orthopedics. With his father as a role model, he joined the MHA program in Fall 2005 and has been the president of the American College of Healthcare Executives (ACHE) Student Chapter for the last academic year. Upon graduation, Erik is going to pursue a one year fellowship at Inova Health System, Virginia. His mentor Jim Terwilliger, VP Operations at UPMC Presby/Shadyside, and his preceptor Mark LaRosa, Director of Planning at Allegheny

General Hospital helped him prepare for his fellowship interview. Erik believes that the Health Economics and Finance courses are likely the two most helpful courses for his new position. Erik is mostly interested in hospital operations and aspires to become the CEO of a hospital in the long run. With respect to his academic experience, Erik felt that the biggest challenge was balancing work and study. Yet, he loved his experience at Pitt and would recommend the program to anybody interested in this field.

Another graduating student is Rachna Mungur Maranchi, 30, from Quatre-Bornes, Mauritius. She has a degree in Biology and works as a research biologist. Rachna is going to join the one year administrative fellowship program at Holy Cross Hospital (Member of Trinity Health) in Silver Spring, MD. She decided to seek a fellowship as she became more aware of the value of such an opportunity through the various activities of the Professional Development program at HPM. Rachna's biggest challenge throughout the program was keeping up with the high volume of assigned readings and projects. Rachna learned most from the Human Resources, Quality Assessment, Managing the Health of Populations, Patient Safety, and Health Law courses at HPM. She considers her mentor Janet Cipullo at Jefferson Regional Medical Center and her preceptor Telford Thomas at The Washington Hospital to be her role models in her career development. In the next few years, Rachna sees herself in a hospital management position, leading a process improvement/quality management team. She eventually aspires

to be a VP of Professional Services in a hospital setting. Finally, Rachna believes that pursuing the MHA Degree at HPM, GSPH has been a worthwhile experience and she ascertains that the knowledge that she gained pursuing it have enhanced her career options. She feels confident and well prepared for the future.

Carisa Gayle Webb, 23, Bedford PA also graduated in April 2007. Carisa was also a full time student who joined the MHA program in Fall 2005 upon completing her Bachelor of Science in Nursing. She accepted the one year administrative fellow position at the Department of Veterans Affairs Medical Center Wilmington, DE. Carissa's advisors and instructors made her aware of opportunities to pursue and assisted her throughout the placement process. Carisa considers the Patient Safety and Quality Assessment courses to be the most helpful for her new position. In the future, she aims at becoming a manager in a hospital specializing in regulatory compliance or quality improvement. While there were definitely challenges during the program, such as at times being incredibly busy, she always felt that she had the needed resources around her to manage it. Carisa is grateful for her parents' love and support and is proud to be part of the HPM family. For Carisa, joining the program was a great way to start her career.

Another graduate is Nicole Marie Hannisick, 24, from Pittsburgh PA. Nicole is also a full time student who joined the program after completing her BA in Political Science and Sociology. She has also been a Graduate Student Assistant to HPM

Department for the last year. Upon her graduation, she plans to pursue her administrative fellowship at Saint Francis Health System for a period of one year. The development of this position was facilitated by Executive-In-Residence for the academic year 2006-07, David Hunter. Nicole believes she is going to benefit the most on her new job from the knowledge she acquired from Patient Safety, Accounting, Quality Assessment, and Managing Health Populations courses. Coming from a purely liberal arts background, Nicole faced the challenge of having to put extra effort to make up for the lack of science and business knowledge. Nicole's career objective is to become a manager in a Pittsburgh healthcare system. She considers Susan Mammarella, CFO of UPMC Braddock, as her career role model because she is a young strong female leader in healthcare today. Nicole had a positive learning experience at GSPH which helped her adopt a multidisciplinary approach to public health and healthcare.

From this year's graduating class, five students successfully competed for administrative fellowship programs in healthcare organizations across the United States. On behalf of the Department of Health Policy and Management, GSPH, we congratulate all the students on their graduation and wish them success in their future endeavors.

For more information on the Department of Health Policy & Management or the MHA, MPH, or JD/MPH academic programs, contact Donna Schultz at dschultz@pitt.edu or (412) 624-3123 or visit www.hpm.pitt.edu.

Lake Erie College of Osteopathic Medicine

CARING FOR
PEOPLE
WILL BE
THEIR LIFE
MISSION.

TEACHING
THEM HOW
IS OURS.



LECOM is one of the largest and most progressive osteopathic medical colleges in the nation and offers a choice of pathways matched to student learning styles.

LECOM meets the growing demand for pharmacists by offering a fast-track, three-year professional degree program.

LECOM added a Master of Science in Medical Education for physicians in 2005 and begins a three-year Family Physician degree program.

LECOM is affiliated with Millcreek Community Hospital, Medical Associates of Erie, Hamot Medical Center, Saint Vincent Health Center, Erie VA Medical Center, and more than 100 medical facilities in 11 states.

LECOM 1858 W. Grandview Blvd. Erie, PA 16509

To learn more, visit our web site www.lecom.edu or call (814) 866-6641

MBA FOR HEALTHCARE PROFESSIONALS



Determined
Capable
Intelligent
Busy
Focused
Knowledgeable
Disciplined
Advancing

- Obtain in-depth knowledge needed to manage within a variety of healthcare fields
- Develop an entrepreneurial outlook for managing practices in medicine and the allied health professions. Course components include financial decision-making, information retrieval and analysis, hiring, marketing, and strategic planning
- Small class sizes enhance learning of the changing healthcare business environment
- No GMAT required
- Evening and weekend classes
- Convenient Shadyside location with free parking evening and weekends

WE ARE YOU

chatham UNIVERSITY

COLLEGE FOR GRADUATE STUDIES

chatham.edu

1000 E. 12th St., Pittsburgh, PA 15203
800-857-1290 • 412-321-1290 • www.chatham.edu

THE REGION'S MONTHLY
HEALTH CARE NEWSPAPER

4417 Old William Penn Hwy. #6
Monroeville, PA 15146

Phone: (412) 856-1954
E-mail: hdkart@aol.com

Website:
www.hospitalnews.org

HARVEY D. KART
Publisher

NANCY CARROLL LAMMIE
Editor

MARJORIE ANN WILSON
Director of Advertising

JUDY GRAMM
Editorial Coordinators

SHANNON NASS
Marketing Assistant

ART/PRODUCTION
JMC Graphics

Contributing Writers
Ron Cichowicz
John Fries
Nancy Kennedy
Ron Paglia
Vanessa Orr
Michael Podrasky
Lois Thomson
Andrea Zrimsek

SISTER PUBLICATIONS

Atlanta Hospital News
Kristen & Josh Felix, Publishers
info@atlantahospitalnews.com

Chicago Hospital News
Kristen & Josh Felix, Publishers
info@chicagohospitalnews.com

South Florida Hospital News
Charles & Carol Felix, Publishers
sflahospitalnews@aol.com

**TO REACH US FOR
ADVERTISING OR EDITORIAL**
Call (412) 856-1954 or
e-mail hdkart@aol.com

REPRINTS
Call (412) 835-5796 or e-mail
carrollncy@aol.com

SUBSCRIPTIONS
One Year \$30
Two Years \$45
Three Years \$60

All rights reserved. Reproduction
in whole or part without written
permission prohibited.
Copyright © 2007

Accolades

The Washington Hospital Recognized as One of "America's Healthiest Companies"

The Wellness Councils of America (WELCOA) has recognized The Washington Hospital as one of "America's Healthiest Companies." The Washington Hospital was among 127 companies nationwide to receive WELCOA's coveted Well Workplace Award for 2006. The Bronze Well Workplace Award recognizes The Washington Hospital for its commitment to the health and well-being of its employees.



The Mercy Hospital of Pittsburgh Receives 2007 HAP Achievement Award for Operational Excellence

The Hospital and Healthsystem Association of Pennsylvania (HAP) recently recognized The Mercy Hospital of Pittsburgh with a HAP Achievement Award for operational excellence for "Improving Efficiency of Patient Care While Increasing Quality." The award-winning entry was submitted by Dr. A.J. Pinevich, vice president of quality and patient safety at the Pittsburgh Mercy Health System.

The HAP Achievement Awards annually showcase and share member hospitals' and health systems' innovation, creativity, and best practices in a variety of patient care areas, including "the development of innovative, adaptable projects that enhance patient satisfaction and improve health care quality, and that produce cost savings and efficiencies."



Dr. A.J. Pinevich, vice president of quality and patient safety, Pittsburgh Mercy Health System, displays the award he received on Mercy's behalf.

Gateway Rehab Center Recognizes Volunteers

Gateway Rehab Center recently held its annual volunteer recognition banquet honoring volunteers for over 7,200 hours of service during 2006.

The 2006 volunteer award for commendable service was presented to Jerry A. Schulhof, D.M.D.

Dr. Schulhof has been a volunteer at Gateway Squirrel Hill outpatient center since 2005 and has provided over 1,200 hours of volunteer service.



Jerry A. Schulhof

James E. Van Zandt VA Medical Center Announces Excellence in Nursing Award Winners

The James E. Van Zandt VA Medical Center, Altoona, PA, acknowledges the recipients of the Secretary's Awards for Excellence in Nursing.

Elizabeth Berndt, R.N., received the Excellence in Nursing award because of her extensive nursing knowledge in her role as Interagency Communications Liaison/Patient Transfer Nurse. She greatly enhanced patient outcome as she facilitated communication and follow-up, such as lab work for chemotherapeutic patients, and other diagnostic tests.

Jennifer Fouse, R.N., received the Excellence in Nursing award because she is highly motivated, knowledgeable and committed to excellence in her role as Infection Control Nurse. She demonstrated effective and high quality nursing practice with her care of patients with associated infectious disease diagnoses, including: HIV, pneumonia, MRSA, and C-Difficile.

Marcy Wertz, L.P.N., received the Excellence in Nursing award because she consistently exceeds all of her routine duties in the outpatient area. In addition to her daily interactions with patients, she reviewed no-show records and followed up with patients to coordinate return visits, when needed. Marcy is very knowledgeable in nursing, medications, treatments, and disease processes. She is an effective instructor and a critical team player in the outpatient area.



Elizabeth Berndt



Jennifer Fouse



Marcy Wertz

PA Hospital Association VP Completes National Nursing Fellowship

Cheri L. Rinehart, R.N., B.S.N., vice president for The Hospital & Healthsystem Association of Pennsylvania (HAP), has completed a three-year Robert Wood Johnson (RWJ) Executive Nurse Fellowship. Rinehart was one of only 20 nurses nationwide selected annually for this fellowship.



Cheri L. Rinehart

PA Hospital Association CEO Named One of Modern Healthcare's "Top 25 Women in Healthcare"

Carolyn F. Scanlan, president and chief executive officer of The Hospital & Healthsystem Association of Pennsylvania (HAP), has been named among the "Top 25 Women in Healthcare" in the April 16, 2007, issue of Modern Healthcare. The recognition highlights female executives whose work has led to significant improvements in the health care industry and its ability to care for patients. Scanlan has been the president and chief executive officer of HAP for nearly 12 years.



Carolyn F. Scanlan

UPMC Braddock Steps to a Healthy Community Initiative Receives HAP Achievement Award

In recognition of its outstanding progress in developing and implementing programs to eliminate health disparities, the UPMC Braddock Steps to a Healthy Community initiative has been honored with the 2007 Achievement Award by the Hospital and Healthcare Systems Association of Pennsylvania (HAP).

HAP selected Steps to a Healthy Community for its annual achievement award in the category of Community Outreach and Engagement.

Steps to a Healthy Community was developed in concert with the goals of the Healthy People 2010 national challenge to eliminate health disparities throughout the country. Healthy People 2010 presented the reality and challenge that all Americans do not enjoy the same full access to quality health care and wellness resources. Those disparities include racial, ethnic and socioeconomic groups throughout the country, and defined "differences in the incidence, prevalence, mortality and burden of diseases and other adverse health conditions."

Accolades

Windber Medical Center Receives Aster Award

Windber Medical Center CEO Nick Jacobs, is proud to announce that Windber Medical Center's trans-fat free marketing campaign received a bronze from The Aster Awards.

With the help of its dining services partner, Cura Hospitality of Allentown, PA, Windber was able to create a successful marketing campaign that continues to promote the fresh and delicious trans-fat free dining options to better meet the needs of hospital patients, guests and staff. According to Jacobs, Windber's trans-fat free marketing campaign featuring the hospital's new trans-fat free patient menu, was launched in the fall of 2006.

We Salute You

As one of the nation's largest healthcare providers, we know that our nursing professionals are critical to our success. Our excellent outcomes would not be possible without the dedication of those providing the high quality care within our facilities nationwide. It is during Nurses Week that we have the opportunity to recognize those that work as a part of our nursing teams to care for our community.

healthsouth.com



HEALTHSOUTH
Metropolitan Hospitals of Pittsburgh



Providing Medical Professionals Records & Information Management Storage Solutions

For comprehensive medical file storage, management and services, call the experts at Iron Mountain.



- Open Shelf Filing
- Storage & Retrieval
- Release of Information
- Facilities Management
- Coding Services
- Interfiling
- Imaging
- Destruction Services
- SafeKeeperPLUS™ Inventory Management
- 24 Hour, 7 Day a Week Access

IRON MOUNTAIN™
HEALTH INFORMATION SERVICES

For Local Services Please Call: 724 742-1360
For Nationwide Services Please Call: 1 800 687-STOR
www.ironmountain.com

© 2001, Iron Mountain Records Management, Inc. All rights reserved.

What's *new*

E-mail your announcements to hdkart@aol.com

Stakeholder Group Led by Pitt Researchers Calls for Reorganization of Critical Care in the United States

The demand for critical care services in the United States will soon outpace the supply of specialists trained in intensive care – a situation that, if not remedied, may prove fatal for critically ill patients. The solution to this problem lies not in recruiting and training more personnel, but in reorganizing the critical care system nationwide, according to a report from a group of critical care stakeholders, led by University of Pittsburgh School of Medicine researchers and published in the April issue of the journal *Critical Care Medicine*.

“The number of Americans over the age of 65 is expected to double by 2030. In addition to non-elective medical admissions for critical illness among chronically ill elders, the growth rate in elective surgical procedures requiring intensive care unit admission, such as bypass surgery, is growing fastest among this age group,” said Amber E. Barnato, M.D., M.P.H., M.Sc., assistant professor, department of medicine, University of Pittsburgh School of Medicine. “All of this means more and more people will demand already strained intensive care services. This anticipated mismatch between supply and demand is perhaps no different for critical care services than for other medical care disproportionately serving elders – ranging from emergency services to long-term care services – but the opportunities for improving the efficiency of the existing system to meet demand are probably greater.”

The report, developed following a meeting of critical care stakeholders called the Prioritizing the Organization and Management of Intensive care Services (PrOMIS) Conference held in September 2005, calls for creation of a tiered, regionalized system for critical care services in an effort to centralize expertise, equipment and facilities. This would make the necessary critical care services readily available to the patients who are most in need.

“Prior conferences aimed at addressing this problem sought input only from critical care professionals, who are a fraction of all the stakeholders,” said Dr. Barnato, lead author of the report. “These groups often stated the need for more trained providers. Surveying a wider group of interested parties, we found that this isn’t necessarily the best or only solution.”

The Care Coordination/Home Telehealth Program at the James E. Van Zandt VA Medical Center

Another Way of Caring for America’s Heroes

The James E. Van Zandt VA Medical Center has been utilizing a program called “Care Coordination/Home Telehealth”. The goals of this program are to decrease hospitalizations, visits to the emergency room, and primary care visits while managing veterans’ symptoms at home. These veterans suffer from diseases including Chronic Obstructive Pulmonary Disease (COPD), hypertension (HTN), diabetes (DM), and chronic heart failure (CHF).

From the comfort of their own homes, veterans, through a telehealth monitoring device attached to their phone, enter information such as blood pressure, weight, and blood sugar to help their primary care provider manage their disease. These monitors ask specific questions regarding symptoms. It also teaches the veteran about their conditions. The veteran must have a touch tone telephone and a land line to participate in the program.

The Care Coordinator at the Van Zandt VA Medical Center is Vickie Lathero, Certified Registered Nurse Practitioner. Her job entails monitoring each individual patient’s data, which is entered daily, and collaborating with the appropriate primary care provider to report any data that is pertinent to the care of that patient. According to Lathero, early detection of changes in the symptoms



Vickie Lathero

or data can prevent hospitalization or emergency room visits.

“Patients have the security of monitoring their health within the comfort of their homes. This reduces their stress levels”, says Lathero.

Education is an essential part of disease management; therefore, it is used extensively in the Care Coordination Program. Through discussion with the veterans and review of their data, the Care Coordinator/Home Telehealth assesses their needs and provides handouts or discusses specific needs, such as medications.

State Grant Awarded To Study Broadband Access Among Pennsylvania Physicians and Hospitals

A proposal by the Pennsylvania Medical Society to use broadband network technologies to improve health care in the Keystone State has received a \$300,000 grant from the Broadband Outreach & Aggregation Fund through the Pennsylvania Department of Community and Economic Development to fund a study that will measure broadband access in doctor offices and other health care settings.

In addition, the study will establish a benchmark for broadband network utilization by Pennsylvania physicians. And, as part of the project, the Society plans to reach out to Pennsylvania physicians and hospitals over the next few months about the value of high-speed broadband access to the delivery of health care.

“It is generally accepted that many physicians lack broadband access, which is necessary to use integrated medical records systems, access real-time medical information, enable telehealth and telemedicine applications, or access certain Internet-based training and educational materials,” said Mark A. Piasio, MD, MBA, president of the Pennsylvania Medical Society. “If more of our state’s doctors used technologies like electronic medical records and electronic prescribing systems, the Pennsylvania Medical Society believes health care would improve in our state. However, as a first step, physicians need to get high-speed Internet access in their practices.”

Dr. Piasio adds that a 2006 Society survey indicated that approximately 7,500 Pennsylvania physicians either have no Internet access or only dial-up access.

Assisting the Pennsylvania Medical Society with the study will be The Affinity Group of Harrisburg, which has completed similar studies related to broadband access in educational settings. As a primary stakeholder in the development of health information technology in Pennsylvania, the state Department of Health is also participating in this project.

HealthSouth Harmarville to Provide Education on Recognizing Symptoms of Concussion in Children

HealthSouth Harmarville was recently awarded a grant from the PA Dept. of Health and Family Services that is being utilized to partner with the Boys and Girls Club of W. PA on the Prevention of Concussion in Youth Sports. The grant will focus on staff leadership education at the Boys and Girls Club on the signs and symptoms of concussion, how and when to seek appropriate medical care, and the importance of bike safety with an event for parents and children. Three Pittsburgh Boys and Girls Clubs have been identified for the 2007 project where each child will receive a free bike helmet for the upcoming summer season. Ela Lewis, Trauma Program Director for HealthSouth Pittsburgh says “As healthcare providers and experts in acute rehabilitation we see individuals whose worlds have been shattered by the devastation of brain injury on a physical, social and financial level. It is difficult for the treatment team to see this trauma on an ongoing basis. However, by providing staff the opportunity to directly intervene and prevent brain injury through community education we are able to sleep a little better at night knowing that we may have prevented a life altering trauma from occurring.”

ARTICLE REPRINTS AVAILABLE

If you would like a reprint of an article that appears in this issue of *Hospital News*, call JLIC Graphics at (412) 835-5796 or e-mail casvalla@aol.com.

Balloon Kyphoplasty Offered at ACMH Hospital

The ACMH Hospital Pain Management Center is offering Balloon Kyphoplasty to correct spinal deformity due to osteoporotic fractures. Dr. Randall Barrett, Medical Director of the Pain Management Center, performs this minimally invasive procedure with excellent results of reduced back pain and improvement in the patient's ability to return to daily activities.

Balloon Kyphoplasty is designed to repair vertebral compression fractures and restore the vertebra(e) to the correct position, reducing back pain, decreasing the number of days in bed, significantly improving mobility and increasing the overall quality of life. The procedure generally takes less than one hour per fracture and may be performed under either local or general anesthesia. In most cases, Medicare provides coverage for Balloon Kyphoplasty. Some other insurance companies also provide coverage.

Dr. Barrett is a local born resident and pain management specialist who has been working at ACMH Hospital since 1997. Dr. Barrett underwent special training to perform Balloon Kyphoplasty and has performed the procedure with remarkable results.



Randall Barrett

CONTACT Pittsburgh Launches 24-Hour Veterans Hotline for Returning Soldiers

CONTACT Pittsburgh announces the launch of its new 24-hour Veterans Hotline for returning soldiers in the greater Pittsburgh area. The hotline - 412-820-HELP (4357) - will provide a source of immediate, round-the-clock emotional support for returning soldiers and their families. Staffed by professionally trained volunteers, the Veterans Hotline was created in response to alarming increases in the rates of suicide among returning soldiers. According to the Veterans Administration, nearly one out of four people who complete suicide in the United States are veterans.

Estimates show that there are more than 3,200 National Guard and Reservists in the Greater Pittsburgh Area who have completed one or more tours of duty in the Middle East. Research predicts that up to 20% of returning soldiers will develop some form of Post-Traumatic Stress Disorder (PTSD), however many of them are reluctant to disclose symptoms because of the stigma attached to a mental illness could affect their jobs, service records, and redeployment status.

VA Pittsburgh Healthcare System Celebrates Vital Research Work

The U.S. Department of Veterans Affairs recently celebrated National VA Research Week in May. The week paid tribute to the medical advances made to improve the lives of veterans. VA research is a national asset that benefits veteran patients and the entire nation by moving medical science forward into the future.

VA investigators played key roles in developing devices and techniques that revolutionized health care, such as, the cardiac pacemaker, the CAT scan, and liver and kidney transplants. The VA conducts biomedical, rehabilitation, clinical, and health services research - as well as large, multi-center clinical trials, at more than 100 medical centers across the country.

VA Pittsburgh Healthcare System (VAPHS) has conducted research in many different health field departments: endocrinology, liver transplantation, post-traumatic stress disorder, cardiology, oncology, neurology, Alzheimer's schizophrenia, and orthopedics. At VAPHS, the total research funding for last fiscal year was over \$22 million, and we hope that funding will keep increasing. 166 investigators worked on 266 projects last year in services such as Center for Health Equity Research and Promotion (CHERP), Geriatric Research Education and Clinical Center (GRECC), Mental Illness Research Education Clinical Center (MIRECC), and Human Engineering Research Laboratories (HERL).

In order to kick-start VAPHS Research Week, Congressmen Mike Doyle and Dr. Joel Kupersmith were featured speakers at a VA Pittsburgh research and awards ceremony. Both of these distinguished speakers support the progress and development in the medical field that the VA research has contributed. Congressman Doyle represents the 14th District of Pennsylvania and is an avid advocate for veterans. Dr. Kupersmith is a distinguished doctor, writer and is the Chief Research and Development Officer of the Department of Veterans Affairs.

Dr. Gerald Goldstein, Ph.D., was given a plaque to honor his outstanding commitment to excellence in research to improve veterans' lives, in recognition of the significant contributions he has made to the field of research over the past 50 years. His dedication to education and recruitment has helped VAPHS recruit outstanding research clinicians who have helped to develop VAPHS as one of the premier neuropsychology centers in the country.



U.S. Congressman Mike Doyle served as keynote speaker for VA Pittsburgh Healthcare's System's Research Week Kick-off Ceremony.

We Help You...

GROW,

SUCCEED, and

REALIZE YOUR MISSION



Carbis Walker LLP

Certified Public Accountants & Consultants

"We Help You"

*providing services specifically tailored
to hospitals, nursing homes, and physicians*

In Pennsylvania

PittsburghButlerNew CastleGrove CityMeadvilleFranklinErie

In Ohio

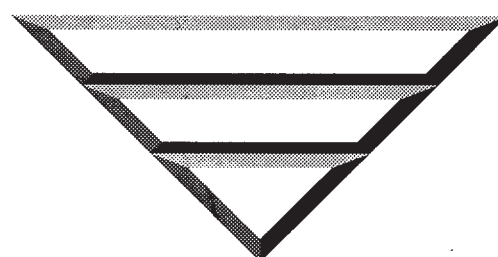
Boardman

800.452.3003

www.carbis.com

Full Service Transportation

**PITTSBURGH
TRANSPORTATION
GROUP**



(412) 322-8596

- ▲ Convention Shuttles
- ▲ Group Charters
- ▲ Limousine Service
- ▲ Corporate Meetings
- ▲ Taxi Service
- ▲ Contract Services
- ▲ Airport Service
- ▲ Sight-seeing
- ▲ Wheelchair Vans

- 24 Hour Service/
365 Days
- Small Group Service
To and From Airport
- Short & Long Term
Arrangements
- Major Credit Cards
Accepted

**YELLOW
CAB CO.**

(412) 321-8100

1301 Beaver Avenue
Pittsburgh, PA 15233



COVER STORY: Going Green

Continued from page 1

Systems: Effective, Measurable, Clean

The project team has taken advantage of overlaps between LEED priorities and health care requirements to design a high quality, efficient and controllable set of MEP systems for the facility. Creation of a campus-wide Central Plant will help to reduce overall energy consumption at the source level and avoid the need for CFC and HCFC refrigerants. In order to ensure the performance of the systems, a construction

air quality plan will be followed, an additional building air flush and filter change will be performed, and a commissioning process has been specified to ensure that all systems perform appropriately from day one.

This commissioning process designates an Information Systems (IS) contractor who will be responsible for the installation of all low voltage, network driven systems (including building automation, telecommunication, structured cabling, network, fire alarm, security, etc.). The IS contractor

will be responsible for the test start and balance of all MEP systems and will provide and manage the test engineer responsibilities for functional performance testing (commissioning).

This approach shifts performance responsibility to the purveyors of the technology, which gives them a stake in the success of the project and thereby helps to ensure overall project success while potentially reducing project costs. A measurement and verification plan is also in place to allow the hospital to track performance over time, and maintain the efficiency of the building into the future.

Materials: Healthy, Durable, Reusable

All building materials have been considered for both their broad environmental impacts and specific impact on the project. Over 25% of the building area, including certain clinical areas, will be located within reused structure from the previous hospital. A significant amount of recycled materials will be used, beginning with the structural steel, which is nearly 100% recycled content. Brick and other exterior and interior finishes selections were made based on local extraction and availability.

Durability, cleanability and the overall quality of the interior environment are also major considerations. The hospital was particularly interested in selecting finishes, adhesives and sealants to reduce volatile organic compound (VOC) emissions into the space, including green label carpets and low-VOC paints and adhesives. Finally, mercury in the building will be reduced

through the specification of HVAC system switches, the careful selection of lamp technologies for reduced mercury content and the review of new medical equipment.

Astorino's design for the new Replacement Facility embodies the Hospital's desire to provide a quality facility that will reinforce the strong reputation of Children's Hospital of Pittsburgh of UPMC. The end product will provide an environment designed to promote healing and provide dedicated staff with the tools necessary to deliver state-of-the-art medical care to patients and their families for generations to come.

Timothy L. Powers, AIA, Senior Vice President – Healthcare, Astorino, can be reached at (412) 209-2832 or tpowers@astorino.com.

BURT, HILL
ARCHITECTURE ENGINEERING INTERIOR DESIGN LANDSCAPE MASTER PLANNING

INTEGRATED
SOLUTIONS
FOR HEALTHCARE
FACILITY DESIGN

www.burthill.com

STERLING
CONTRACTING
LLC

GENERAL CONTRACTORS

New & Renovation
Commercial Construction

Specializing in: Hospital/Medical Facilities
Doctor Offices
Laboratory Renovations

904 McClure Street
Homestead, PA 15120

Phone: 412-326-0031
Fax: 412-326-0039

New WholeHealth Outpatient Facility Puts the Focus on Keeping You Well

Imagine going to see your doctor for an appointment. He orders a blood test and you go downstairs to have it done. He also orders an MRI scan, which you schedule there as well, for next Saturday – a time that's convenient for you. Afterward, you head upstairs for a chemical peel and a massage before you stop to see your health coach and discuss your health goals. Then you go down the hall to exercise. Oh you, stop and buy some skin care products before you leave.

Does this sound like a hospital visit? It's not. It is an example of a health care center of the future – except that it isn't the future. It's now. And it's called BHS WholeHealth.

"The way health care is delivered and how it all fits together is changing dramatically," says Jana Panther, Director of Outpatient Services for Butler Health System.

Many people tend to think about hospitals as places where the sick get healthy, but Butler Health System (BHS) is adding a new approach – keeping the healthy from getting sick. With BHS WholeHealth, we're focusing on wellness and prevention.

"We want people to know that we'll

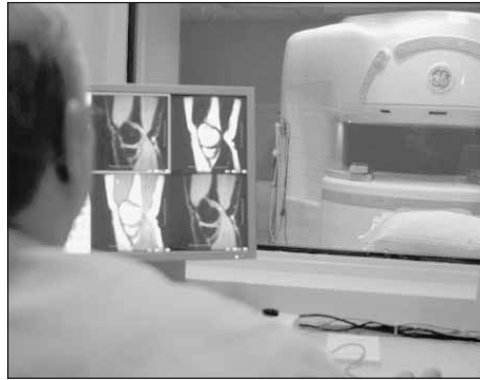
be there when they're sick, but we encourage and support them to remain well all the time," Panther says.

Now officially open at the Rose E. Schneider Family YMCA at Route 19 and Ehrman Road in northern Cranberry Township, BHS WholeHealth is a full-service outpatient facility providing a range of health and wellness services, from walk-in medical care and diagnostics to nutritional guidance and health coaching.

BHS WholeHealth's collaboration with the YMCA is the first of its kind in western Pennsylvania.

As a full-service facility, BHS WholeHealth provides many of the same services found at Butler Memorial Hospital. Patients can walk-in for blood work and routine x-rays; as well as schedule mammograms, MRIs (magnetic resonance imaging), CT (computed tomography) scans, ultrasounds, and osteoporosis and cardiovascular screenings. In addition, on site appointments are available for diabetes and gynecological care, and even treatment of minor illnesses.

Having the hospital's services in the



The BHS WholeHealth site offers a fixed open MRI machine for patients who need diagnostics testing.



Quickly scheduled CT scans allow physicians to diagnose their patients in a timely manner.

YMCA takes health and wellness to "the next level," said YMCA Executive Director Dave Hilliard.

"People can work on becoming healthier through YMCA programs and medically better through WholeHealth services, and people are excited about that," said Hilliard.

Aqua massage is available at BHS WholeHealth to relieve tension and serve as a method of relaxation even after a work out. Traditional massage therapy is also offered.



24 Hour Service:

- Commercial
- Residential
- Industrial
- Utility

Service Division
ELECTRICAL SERVICE • MAINTENANCE

724/873-3500

Need Help?...Just Call!

Service@LighthouseElectric.com

www.lighthouseelectric.com

Grove City College Co-eds Remodel Waiting Room

On the evening of Saturday, April 14th, while many of their counterparts' immediate plans were focused on various social and entertainment options, ten Grove City College co-eds were deciding how best to apply three coats of paint to all of the walls in Grove City Medical Center's emergency department waiting area. The task was a major component of a community service effort undertaken by the Crown and Scepter honorary. Culminating six months of planning, the end result is a significantly improved waiting area that serves nearly 15,000 people annually.

"We're delighted with what they've done with the waiting room," said Sherry Latshaw, Clinical Coordinator of the Emergency Department at Grove City Medical Center. "It's everything we'd hoped for, and more."

The project was born out of two telephone conversations that occurred within a few days of each other, both involving JoAnne Clobus, Executive Director of Marketing and



(l-r) Dr. David Silvis, Emergency Room physician; Sherry Latshaw, Clinical Coordinator of the Emergency Department; Robert Jackson, Chief Executive Officer and Kimmy Ross of Crown and Scepter.

Public Relations for the hospital. When Latshaw approached her with a request last summer to "help me figure out a way to spruce up the waiting area," Clobus took a look at the area for herself. "It was fairly dismal," she recalled. The waiting room was shabby, at best, and with good reason. "It takes more wear and tear than practically any other area in the hospital," said Mark Arblaster, Director of Plant Operations.

Fate took a hand in presenting a potential solution to update the room when Clobus received a call from Tuscon, AZ. Kimmy Ross, who would be returning to Grove City soon as a sophomore at Grove City College, was the president of the Crown and Scepter honorary group, and the girls were searching for a significant community service project to take on. "The first thing I asked her was if she'd ever seen 'Design on a Dime' on television," said Clobus. "She hesitated for just a second and then asked me what I had in mind!"

Ross shared the idea of renovating the emergency room waiting room with the Crown and Scepter membership and they visited the hospital to survey the area. The girls decided the project would be manageable. During the planning phase that followed, the group developed three different ideas for how they might redecorate the room. Ross proposed the three plans to the hospital's administrative staff and key employees who would support the project from various departments, as well as Rob Jackson, Chief Executive Officer and Dr. Matthew Glenn, Medical Director for the Emergency Department. A major consideration was the need for everything used in the hospital, including textiles and surface finishes, to meet the regulations established by a number of governing bodies, including the PA Department of Health.

While the hospital representatives found each of the designs appealing, they decided a combination of elements from all three most fitting for the room. A soft green color on the walls, they felt, would add a calming effect, an important factor, since those who would be spending time there would be experiencing discomfort and anxiety. At the end of the discussion, everyone agreed that the style of the area would be "eclectic with a strong Zen influence."

Over the next several months, Clobus worked as a liaison between hospital staff and Ross to coordinate the reupholstering of the waiting room furniture, as well as the purchase of several occasional tables and lamps, and materials for the most labor intense part of the project—the painting. "The walls were covered with vinyl wallpaper, and Mark and I decided that removing it could turn into a nightmare," said Clobus. "So we researched different options through the local paint supply store and found a primer that can be used over wallpaper to make new paint adhere to it."

However, the most strategic component of the project was yet to come. "Scheduling downtime and keeping it minimal for an area that never closes is challenging," said Clobus. After several failed attempts to coordinate the girls' schedules and the temporary closing of the waiting room to complete the painting, Jackson suggested they work through a Saturday evening, when the Emergency Department sees the least amount of activity.

Volunteers were on hand to relocate patients' friends and family members to another waiting area nearby and after kicking off the evening with pizza and sodas, the group immersed themselves in the task at hand. "There was a lot of energy in the room," said Latshaw. "The girls were amazing with paint rollers!" Within four hours, the walls were painted and a few days later, Arblaster's staff put the finishing touches on the room.

Highlighting the décor are an inscribed clock donated by Wendell August Forge to commemorate the project along with 14 framed black and white photographs of the local landscape taken by Crown and Scepter member Colleen Castle. "They are absolutely stunning," said Clobus. "The entire room is beautiful, but everyone who visits is taken by the photographs." The final detail to be added was a child's oak table and chairs, crafted by a local Amish carpenter to complete the room.

The architecture of healing.

Our architects are bringing something new to life in healthcare. Read all about Children's Hospital of Pittsburgh of UPMC and our other exciting projects at www.astorino.com/healthcare.

PITTSBURGH
PALM BEACH GARDENS
NAPLES

ASTORINO
Architecture Engineering Interior Design Design/Built

UC AA 26000853 IB26000667 2597

UPMC Opens New Cancer Center in Dublin, Ireland

Ireland's minister for health and children, Mary Harney, officially opened the Beacon Hospital Cancer Centre recently in Dublin, Ireland. The new center provides cancer patients in Dublin with state-of-the-art radiation therapy and is the second international cancer center for the University of Pittsburgh Medical Center (UPMC).

"By linking the Beacon Hospital Cancer Centre with our network of UPMC Cancer Centers, we are able to provide cost-effective and technologically advanced radiation therapy locally to the residents of Ireland's capital and largest city," said Jeffrey Shogan, M.D., director of business services and chief business officer at UPMC Cancer Centers.

The Beacon Hospital Cancer Centre provides patients with intensity-modulated radiation therapy (IMRT) and image-guided radiation therapy (IGRT). The center also houses Europe's first Trilogy TX image-guided radiosurgery system

from Varian Medical Systems.

In addition to radiotherapy, the cancer center offers comprehensive care, including cancer imaging and medical and surgical oncology services under one roof. A joint program of Triad Hospitals Inc. and UPMC Cancer Centers, the new center is housed within the Beacon Hospital, a private facility that opened in January 2007.

The center is based on UPMC Cancer Centers' hub-and-satellite model, which links community-based satellite locations to a hub facility, the Hillman Cancer Center, in Pittsburgh through a telecommunications network. The network allows highly trained medical physicists based at the Hillman to share information and expertise with radiation specialists at satellite centers when developing highly complex radiation treatment plans for individual patients.



MEDICAL/OFFICE SPACE

Singularity Clark, LP



717 LIBERTY AVE., SUITE 2300,
PITTSBURGH, PA 15222

Clark Building -
Convenient Cultural District Location

Perfect for Medical and Physician Offices

- 500 - 2,500 sq. ft. available
- From \$16/per sq. ft.
- 12,000 sq. ft. per floor
- Exceptional Views
- Long Term Leases
- Close to Subway Station
- Panoramic View
- Brokers Welcome!
- Parking Available

Contact Number:
(412) 302-8249

OFFICE SUITES • SHARED OFFICES • MEDICAL SUITES

Our eleven building complex offers professional office suites from 150 to 5,000 square feet as well as conference facilities. Take advantage of our convenient location and amenities.

- 18 minutes from Downtown Pittsburgh
- 5 minutes from FA Turnpike
- Walkways lead, Fox Chapel Plaza and many other shops and restaurants all in the immediate area
- No Business Tax
- Free & Convenient Parking
- Shared by Participating Leases
- Adjacent to U.S. Post Office
- On-site Management & Maintenance
- Customized Office Build-outs
- Shared Office Space



FOX CHAPEL OFFICE CENTER
1361 Old Freeport Rd., Suite 2A • Pgh., PA 15235-0764
Tel: 412-953-6165 • Fax: 412-953-7571 • foxchapel@fox.com

5425 BAUM BOULEVARD • Pittsburgh, Pennsylvania 15232 Unique Development Opportunity

- In the fastest growing business corridor in Pittsburgh
- Located a few blocks from the new Hillman Cancer Center and Shadyside Hospital
- 10 Parking spaces on asphalt paved parking lot, with additional parking possible.
- Currently in use as a Hospital/Day Care facility
- Medical air system and other hospital/medical features in place
- Could be Medical offices, offices or developed as a stand alone building of greater height
- Lot size: 14,654 square feet
- One story cement block building with brick facing on city percent



Contact: Neil Morrow
Broker 412.298.2053
www.ibex.com

*Don't forget Hospital News
in your 2007 marketing plans*

Call for more information at 412-856-1954 or
visit our website at www.hospitalnews.org

PRIME OFFICE SPACE AVAILABLE!

CHURCHILL AREA

1830 SQUARE FEET FOR ONLY \$1,070/MONTH

- OR -

2396 SQUARE FEET FOR ONLY \$1,400/MONTH

- FREE OFF-STREET PARKING
- EASY ACCESS
- CONVENIENT TO MONROEVILLE, DOWNTOWN & SURROUNDING AREAS
- FED EX PICKUP AND DROP-OFF AT YOUR FRONT DOOR
- RAKERS FEE

CALL TODAY! 412-242-5390



Prime Office Space Available!

North Oakland/ Shadyside Area
385 Square Feet Only \$896/Month
322 Square Feet Only \$473/Month
Offices can be combined.
Both adjacent to common walking area.



Established practices surround perfect
for Dr. Office or small professional practice!
Off-street parking spaces available. Call Today (412) 683-8683

Medical Laboratories Available Downtown

Corner of Smithfield and Fifth
Pre-plumbed office - all sizes
Save the cost of building your own medical laboratory

Contact Lori Friday at E.V. Blshoff Company


412-235-6024

lfriday@evbco.com

Contact Margie Wilson to find out how your organization or business can be featured in the Hospital News Resource Directory.

If your organization is looking for a way to get the word out to over 36,000 health care professionals every month, then our Resource Guide is right for you! Call (412) 856-1954 today!

HOSPITALS



Telemetry • Respiratory Therapy
Wound Management • Nutritional Services
Surgical Services • Ventilator Weaning
Daily Physician Visits • Pulmonary Rehab
Physical, Occupational and Speech Therapies
Subacute Rehabilitation Unit (North Shore)

Kindred Hospital Pittsburgh
412.404.5500, ext. 4350

Kindred Hospital Pittsburgh – North Shore
412.323.5800

Kindred Hospital at Heritage Valley
724.775.0877

www.kindredhealthcare.com

DRUG ADDICTION/ALCOHOLISM TREATMENT

GATEWAY REHABILITATION CENTER

Gateway Rehabilitation Center provides treatment for adults, youths, and families with alcohol and other drug problems within a network of inpatient and outpatient centers located in Pennsylvania and eastern Ohio. Services offered include free evaluations, detoxification, inpatient, partial hospitalization, intensive outpatient, outpatient counseling, and halfway house. Comprehensive school-based prevention services offered. Employee assistance program (EAP) services available. Visit www.gatewayrehab.org or call 1-800-472-1177 for more information.

EMPLOYMENT DIRECTORY

BRIGHTSTAR HEALTHCARE™

24-7 BrightStar Healthcare is a woman-owned staffing company that provides supplemental staff to corporate and private duty clients. We are able to provide healthcare professionals ranging from nurses to medical receptionists to PT and OT, as well as non-medical caregivers. We are available to our clients 24 hours 7 days a week, serving the South Hills and Greater Pittsburgh areas. Our office is located at 300 Mt. Lebanon Blvd. Suite 210A Pittsburgh PA 15234. Contact us at (412)561-5605 or email Pittsburgh@247brightstar.com

INTERIM HEALTHCARE SERVICES

Offers experienced nurses the opportunity to practice their profession in a variety of interesting assignments - from health facility staffing to home care and private duty. Full- or part-time - the professional nursing alternative throughout southwestern Pennsylvania.

Krishna Konton
 Recruiter
 1789 S. Braddock
 Pittsburgh, PA 15218
 800-447-2030



PRESBYTERIAN SENIORCARE

As this region's premiere provider of living and care options for older adults, Presbyterian SeniorCare offers a wide variety of employment opportunities—all with competitive wages and comprehensive benefits—at multiple locations throughout southwestern Pennsylvania. As part of its philosophy of Human Resources, PSC strives to develop a rewarding work environment that is rich in interdepartmental cooperation and that recognizes the value of each individual employee.

Human Resources Department,
 1215 Hulton Road, Oakmont, PA 15139
 412-826-6123 or call our "Job Line" 412-826-6080

ST. BARNABAS HEALTH SYSTEM

RNs, LPNs, Home Care Companions

St. Barnabas Health System is comprised of a 172-bed skilled nursing facility in Gibsonia, a 91-bed skilled nursing facility and 59-bed assisted living facility in Valencia, an outpatient Medical Center and three retirement communities. RN and LPN positions available at the two nursing facilities. Home Care Companion positions available to assist our Retirement Village and community clients with daily living and personal care needs. Earn great pay and benefits now. Fantastic country setting, convenient drive from Pa. Turnpike, Rts. 8 & 19, Interstates 79 & 279.

Margaret Horton, Director of Personnel,, 5830 Meridian Road,
 Gibsonia, PA 15044 • 724-443-0700, ext. 258

EXTENDED CARE & ASSISTED LIVING

ASBURY HEIGHTS

For almost a century, Asbury Heights, operated by United Methodist Services for the Aging, has been providing high-quality compassionate care to older adults in Southwestern Pennsylvania. Asbury Heights is a faith-based, non-profit charitable organization, located in Mt. Lebanon. Through various accommodations, services and amenities, the needs of independent living residents can be met. For residents requiring more care, the continuing care community also offers assisted living, nursing and rehabilitative care, Alzheimer's specialty care and adult day services. The Health and Wellness Center is headed by a board certified, fellowship trained geriatrician. Residents may be treated by on-site specialists or retain their own physicians. Rehabilitative therapies are also available on-site. A variety of payment options are available to fit individual financial situations. The application process is very quick and easy and does not obligate the applicant in any way. For more information, please contact Joan Mitchell, for Independent Living; Suzanne Grogan for Nursing Admissions; or Kelley Ames for Assisted Living at 412-341-1030. Visit our website at www.asbury-heights.org.

BAPTIST HOMES OF WESTERN PA

Baptist Homes has been serving older adults of all faiths on its campus in Mt. Lebanon since 1910. Our mission is to offer a full continuum of enriched living, compassionate care, and benevolence to a broad spectrum of individuals. We are accredited by the Continuing Care Accreditation Commission (CCAC), and serve almost 300 adults with skilled and intermediate nursing care, Alzheimer's care, assisted living/personal care and HUD independent living. In addition, our residents have access to a full range of rehabilitative therapies and hospice care. Baptist Homes is a licensed Continuing Care Retirement Community (CCRC) and is Medicare and Medicaid certified. For more information, visit our website at www.baptisthomes.org or arrange for a personal tour by calling Pam Tomczak. Admissions Coordinator, at 412-572-8247. Baptist Homes is conveniently located at 489 Castle Shannon Boulevard, Pittsburgh, PA 15234-1482.

COMMUNITY LIFE

Living Independently For Elders

Community LIFE is a non-profit program that offers all-inclusive care that goes beyond the traditional boundaries of elder care. It allows seniors to remain in the community, maintain their independence, and allows them to enjoy their golden years at home. Community LIFE provides older adults with fully integrated and coordinated health and social service, usually at no cost to qualified individuals. Participant in the program are transported to our day health center on an as-needed basis, to receive healthcare and social services, meals, and participate in various activities.

The LIFE Center is staffed by a geriatric physician, RN's, physical and occupational therapists, dietician, social worker, and aides, and includes a medical suite for routine exams and minor treatments, some emergency care, therapy areas, dining/activity space, personal care area and adult day services. Community LIFE offers complete, coordinated healthcare for the participant, including all medical care, full prescription drug coverage, rehab therapies, transportation and in home care. If you or someone you care about is having difficulty living in the community, then call Community LIFE at 412-464-2143.

KANE REGIONAL CENTERS

The Kane Regional Centers, located in Glen Hazel, McKeesport, Ross and Scott, provide 24-hour skilled nursing care, rehabilitation services, specialty medical clinics and dedicated units for dementia care to the residents of Allegheny County. Admission to the Kane Regional Centers is based on medical needs and can occur within 24 hours, including weekends and holidays. Kane accepts a number of insurance plans well as private pay. To apply for admission to the Kane Regional Centers call (412) 422-6800.

OAKLEAF PERSONAL CARE HOME

"It's great to be home!"

Nestled in a country setting in a residential area of Baldwin Borough, Oakleaf Personal Care Home provides quality, compassionate care to adults who need assistance with activities of daily living. As we strive to enhance the quality of life of our residents, our staff constantly assesses their strengths and needs as we help them strike that fine balance between dependence and independence. Oakleaf offers private and shared rooms, all located on one floor. Our home includes a spacious, sky-lighted dining room, library, television lounges, sitting areas and an activity room. Our fenced-in courtyard, which features a gazebo, provides our residents with a quiet place to enjoy the outdoors, socialize with family and friends, and participate in planned activities. Upon admission, the warmth of our surroundings and the caring attitude of our staff combine to make Oakleaf a place residents quickly call "home". Please call for additional information, stop by for a tour or visit us on our website. www.oakleafpersonalcarehome.com

3800 Oakleaf Road, Pittsburgh, PA 15227
 Phone (412) 881-8194, Fax (412) 884-8298
 Equal Housing Opportunity

PRESBYTERIAN SENIORCARE

A regional network of living and care options for older adults throughout southwestern Pennsylvania. Services and facilities include skilled and intermediate nursing care, rehabilitation, personal care, specialty Alzheimer's care, adult day care, home healthcare, senior condominiums, low-income and supportive rental housing. For more information:

Presbyterian SeniorCare - Oakmont
 1215 Hulton Road, Oakmont, PA 15139
 412-828-5600
 Presbyterian SeniorCare - Washington
 825 South Main Street, Washington, PA 15301
 724-222-4300

ST. BARNABAS HEALTH SYSTEM

St. Barnabas Health System offers a continuum of care at its two campuses in the North Hills. Skilled nursing care is offered at the 172-bed St. Barnabas Nursing Home in Richland Township, Allegheny County, and the 47-bed Valencia Woods at St. Barnabas in Valencia, Butler County. The Arbors at St. Barnabas offers assisted living for up to 182 persons. All three facilities offer staff-run, on-site rehabilitative services, extensive recreational opportunities, and beautiful, warm decor. Home care is available at the St. Barnabas Communities, a group of three independent-living facilities: The Village at St. Barnabas, The Woodlands at St. Barnabas and The Washington Place at St. Barnabas. The Washington Place, a 23-unit apartment building, has hospitality hostesses on duty to offer residents support as needed. St. Barnabas Health System, a non-denominational, faith-based organization, has a 106-year tradition of providing quality care regardless of one's ability to pay. For admissions information, call:

- St. Barnabas Nursing Home
5827 Meridian Road, Gibsonia, PA 15044, (724) 444-5587
- Valencia Woods at St. Barnabas/The Arbors at St. Barnabas
85 Charity Place, Valencia, PA 16059, (724) 625-4000 Ext. 258
- St. Barnabas Communities
5850 Meridian Rd., Gibsonia, PA 15044, (724) 443-0700, Ext. 247

WESTMORELAND MANOR

Westmoreland Manor with its 150 year tradition of compassionate care, provides skilled nursing and rehabilitation services under the jurisdiction of the Westmoreland County Board of Commissioners. A dynamic program of short term rehabilitation services strives to return the person to their home while an emphasis on restorative nursing assures that each person attains their highest level of functioning while receiving long term nursing care. Westmoreland Manor is Medicare and Medicaid certified and participates in most other private insurance plans and HMO's. We also accept private pay. Eagle Tree Apartments are also offered on the Westmoreland Manor campus. These efficiency apartments offer independent living in a protective environment.

Shelley Thompson, Director of Admissions
 2480 S. Grande Blvd., Greensburg, PA 15601 • 724-830-4022

HOME CARE / HOSPICE

ASERACARE HOSPICE

(formerly Hospice Preferred Choice)

HPC provides services in Allegheny county and 5 surrounding counties. Care may be received at home or in extended care settings. The patient and family are the primary decision makers with assistance from the attending physician and the hospice team. The clinical expertise of our hospice team includes RN's, LPN's, home health aides, social workers, spiritual coordinators, bereavement specialists and trained volunteers which are available twenty-four (24) hours a day, seven (7) days a week. For more information, call (412) 271-2273 or (800) 570-5975.

CONCORDIA VISITING NURSES

Concordia Visiting Nurses provide skilled and psychiatric nursing, physical a, occupational and speech therapies, wound and ostomy care, respiratory therapy, nutritional counseling, infusion therapy, maternal/child care, in your own home. The TeleHealth Monitoring System is a free service that keeps you constantly connected to your doctor and HealthWatch personal response system is an electronic device designed to summon help in an emergency. Concordia Visiting Nurses pledged same day service, weekend referrals and evaluation visits for post-emergency room patients. It is a non-profit, Medicare certified home care agency that accepts most major insurances. Contact Concordia Visiting Nurses at 1-877-352-6200.

GATEWAY HEALTH HOSPICE

Gateway's hospice services remains unique as a locally owned and operated service emphasizing dignity and quality clinical care to meet the needs of those with life limiting illness.

Quality nursing and home health aide visits exceed most other agencies. Our commitment to increased communication and responsiveness to those we serve is our priority.

Medicare certified and benevolent care available. Gateway serves patients in Allegheny and ALL surrounding counties. Care is provided by partnering with facilities and hospitals in addition to wherever the patient "calls home". For more information call 1-877-878-2244

INTERIM HEALTHCARE

Interim HealthCare is a national comprehensive provider of health care personnel and service. Interim HealthCare has provided home nursing care to patients since 1966 and has grown to over 300 locations throughout North America. Interim HealthCare of Pittsburgh began operations in 1972 to serve patient home health needs throughout southwestern Pennsylvania and northern West Virginia. IHC of Pittsburgh has been a certified Medicare and Medicaid home health agency since 1982. IHC provides a broad range of home health services to meet the individual patient's needs – from simple companionship to specialty IV care – from a single home visit to 24 hour a day care. IHC has extensive experience in working with facility discharge planners and health insurance case manager to effect the safe and successful discharge and maintenance of patients in their home. For more information or patient referral, call 800-447-2030.

1789 S. Braddock, Pittsburgh, PA 15218
 3041 University Avenue, Morgantown, WV 26505

LIKEN HEALTH CARE, INC.

Established in 1974, is the city's oldest and most reputable provider of medical and non-medical care in private homes, hospitals, nursing homes, and assisted living facilities. Services include assistance with personal care and activities of daily living, medication management, escorts to appointments, ambulation and exercise, meal preparation, and light housekeeping. Hourly or live-in services are available at the Companion, Nurse Aide, LPN and RN levels. Potential employees must meet stringent requirements; screening and testing process, credentials, references and backgrounds are checked to ensure qualifications, licensing, certification and experience. Criminal and child abuse background checks are done before hire. Liken employees are fully insured for general and professional liability and workers' compensation. Serving Allegheny and surrounding counties. Free Assessment of needs available. For more information write to Private Duty Services, 400 Penn Center Blvd., Suite 100, Pittsburgh, PA 15235, visit our website www.likenservices.com, e-mail info@likenservices.com or call (412) 816-0113 – 7 days a week, 24 hours per day.

TRINITY HOSPICE

Trinity Hospice offers comprehensive care focused on easing the physical, emotional and spiritual pain that often accompanies terminal illness. Trinity Hospice provides an alternative to routine home care and repeated hospitalizations. Offering outstanding care, the hospice team members are dedicated professionals and trained volunteers who specialize in meeting the individualized needs of terminally ill patients and families. For more information or to schedule an assessment, please call 1-888-937-8088.

2020 Ardmore Boulevard, Suite 210
 Pittsburgh, PA 15221
www.trinityhospice.com

VITAS INNOVATIVE HOSPICE CARE® OF GREATER PITTSBURGH

Hospice of Greater Pittsburgh Comfort Care is now a part of VITAS Innovative Hospice Care, the nation's largest and one of the nation's oldest hospice providers. When medical treatments cannot cure a disease, VITAS' interdisciplinary team of hospice professionals can do a great deal to control pain, reduce anxiety and provide medical, spiritual and emotional comfort to patients and their families. We provide care for adult and pediatric patients with a wide range of life-limiting illnesses, including but not limited to cancer, heart disease, stroke, lung, liver and kidney disease, multiple sclerosis, ALS, Alzheimer's and AIDS. When someone becomes seriously ill, it can be difficult to know what type of care is best ... or where to turn for help. VITAS can help. For Pittsburgh, call 412.799.2101 or 800.620.8482; for Butler, call 724.282.2624 or 866.284.2045.

PUBLIC HEALTH SERVICES

ALLEGHENY COUNTY HEALTH DEPARTMENT

The Allegheny County Health Department serves the 1.3 million residents of Allegheny County and is dedicated to promoting individual and community wellness; preventing injury, illness, disability and premature death; and protecting the public from the harmful effects of biological, chemical and physical hazards within the environment. Services are available through the following programs: Air Quality; Childhood Lead Poisoning Prevention; Chronic Disease Prevention; Environmental Toxins/Pollution Prevention; Food Safety; Housing/Community Environment; Infectious Disease Control; Injury Prevention; Maternal and Child Health; Women, Infants and Children (WIC) Nutrition; Plumbing; Public Drinking Water; Recycling; Sexually Transmitted Diseases/AIDS/HIV; Three Rivers Wet Weather Demonstration Project; Tobacco Free Allegheny; Traffic Safety; Tuberculosis; and Waste Management. Bruce W. Dixon, MD, Director

333 Forbes Avenue, Pittsburgh, PA 15213
 Phone 412-687-ACHD • Fax 412-578-8325 • www.achd.net

PEDIATRIC SPECIALTY
HOSPITAL

TRANSITIONAL INFANT CARE (T.I.C.®) AND
TRANSITIONAL PEDIATRIC CARE

A fully licensed 28-bed Pediatric Specialty Hospital with Transitional Infant Care (T.I.C.®) and Transitional Pediatric Care units. Sub-acute care for medically fragile or technology dependent children who need continued hospitalization in a sub-acute setting. Teaches parents to provide complicated treatment regimens. Hospice care also provided. Staff includes neonatologists, pediatricians, a variety of physician consultants/specialists, and R.N./C.R.N.P. staff with NICU and/or PICU experience. A state-of-the-art facility with the comforts of home. Family living areas include private bedrooms, kitchens, living and dining rooms, and Austin's Playroom for siblings. Admits children from Western PA, the tri-state area and beyond. For more information, or to schedule a tour, contact: Deborah Flowers, Chief Clinical Officer
The Children's Home of Pittsburgh & Lemieux Family Center
5324 Penn Avenue
Pittsburgh, PA 15224
412-441-4884 ext. 3042

REHABILITATION

THE PT GROUPSM PHYSICAL THERAPY

Since 1978 THE pt GROUP has provided early evaluations and continuous progressive care under the same licensed therapist for orthopedic and neurological injuries and conditions. In addition, divisions are available treating serious workers' compensation injuries (Work Recovery Centers); pelvic floor dysfunction, incontinence, and lymphedema (Physical Therapy For Women) and balance and neurological disorders (Balance Therapy). We are not owned or controlled by doctors, hospitals, or insurance companies, but evaluate, and treat, and 000000home exercise programs, under hundreds of physicians' prescriptions covered by most of the work, auto and managed care programs. Call 1-888-PT-FOR-YOU (1-888-783-6796) or www.thept-group.com.

OUTPATIENT CENTERS

Apollo - 724-478-5651	McKeesport/N. Versailles - 412-664-9008
Blairsville - 724-459-7222	Monroeville - 412-373-9898
Derry - 724-694-5737	Moon Township - 412-262-3354
Greensburg - 724-838-1008	Mt. Pleasant - 724-547-6161
Greensburg West - 724-832-0827	Munhall - 412-461-6949
Harrison City - 724-527-3999	Murrysville - 724-325-1610
Irwin - 724-863-0139	New Alexandria - 724-668-7800
Jeannette - 724-523-0441	Penn Hills - 412-241-3002
Latrobe - 724-523-0441	Pittsburgh Downtown - 412-281-5889
Ligonier - 724-238-4406	Pittsburgh Uptown - 412-261-5650
Lower Burrell/New Kensington- 724-335-4245	

PHYSICAL THERAPY FOR WOMEN

Monroeville - 412-373-9898 Harrison City - 724-527-3999

BALANCE THERAPY

Blairsville - 724-459-7222	Greensburg - 724-838-1008
Harrison City- 724-527-3999	Irwin - 724-863-0139
Moon Township - 412-262-3354	New Alexandria 724-668-7800
Pittsburgh- Uptown - 412-261-5650	

WORK RECOVERY CENTER (FCE Scheduling)

Greensburg - 724-838-7111

OCCUPATIONAL THERAPY

Apollo - 724-478-5651	McKeesport - 412-664-9008
Harrison City - 724-527-3999	Monroeville - 412-373-9898
Irwin - 724-863-0139	Murrysville - 724-325-1610
Jeannette - 724-523-0441	Lower Burrell - 724-335-4245
Latrobe - 724-523-0441	Penn Hills - 412-241-3002
Ligonier - 724-238-4406	

SPECIALTY HOSPITAL

TIC®, TRANSITIONAL INFANT CARE
(T.I.C.®) HOSPITAL

Operates as a fully licensed acute care pediatric specialty hospital. Independent and not-for-profit, T.I.C.® was conceived as a bridge between Neonatal Intensive Care Units and the home. Provides excellent medical care to infants who are medically stable but not yet ready to go home, and develops the family's hands-on ability to deal with complicated treatment regimens. Staff includes 16 neonatologists, 19 pediatricians, a variety of physician consultants/specialists and exclusive R.N. staff with NICU and/or pediatric experience. The only facility of its kind in the country, T.I.C. is increasingly recognized as a model for delivery of a new level and type of care. Located near Fifth Avenue in Pittsburgh's Shadyside neighborhood, T.I.C. admits infants from across W.P.A, but also from the tri-state area and beyond. For more information, or to schedule a tour, contact:
Deborah Flowers Chief Clinical Officer
5618 Kentucky Ave.,
Pittsburgh, PA 15232 x 412-441-4884 ext. 219
T.I.C. is a program of The Children's Home of Pittsburgh.

STAFFING SERVICES

TSN NURSE, INC. (TSN)

HEALTHCARE STAFFING SERVICES

TSN's staffing focus is on temporary staffing or temp-to-perm for Registered Nurses, Licensed Practical Nurses and Certified Nurse Assistants. Other allied health needs can be provided if needed.

- Quality, cost effective services with competitive rates
 - 24 hour 7 day a week coverage
 - Comprehensive screening and extensive training prior to hire
 - Meets JCAHO requirements
 - Comprehensive client needs assessment prior to staffing
 - We provide client specific customized training provided prior to assignment
 - Client satisfaction surveys
 - Comprehensive staff evaluations with client feedback
- Please contact us at 412-894-0000 or fax at 800-473-3147 or you can email us at info@tsnnurse.com

Business Directory

APARTMENTS & TOWNHOUSES

ALVERN GARDENS

1, 2, 3 Bedroom Apartments from \$540. 24 hr emergency maintenance, new windows, remodeled kitchen, laundry facilities, wall to wall carpet, extra storage, covered parking available, Keystone Oaks School District, 1% wage tax, close to trolley, swimming pool.
1000 Vermont Ave.
Castle Shannon 412-563-RENT • 412-561-4663

AUTO DEALERS

COCHRAN INFINITI VEHICLE GALLERY

Pittsburgh's Exclusive Infiniti Dealer
4845 William Penn Highway, Murrysville
One Mile East of the #1 Cochran MegaCenter
Our Cochran Concierge Service caters to your every need with:
• Personalized test drives at your home, office or club
• Complimentary pick-up, delivery and loaner cars with scheduled service appointments
For more information call 412-856-2222 or visit us at cochran.com

INVENTORY SPECIALISTS

HOSPITAL INVENTORIES SPECIALISTS, INC.

Hospital Inventories Specialists, Inc. is an established source for reliable inventory services & data compilation. HISI understands that cost savings, efficiency, inventory control and compliance with the Sarbanes-Oxley Act are critical. Our services are customized to meet your needs. Related services include:

Inventory Services:

- FYE Reporting
- Database Construction
- Data Cleansing
- Acquisitions, Mergers, Sales
- JCAHO Preparation
- Software Implementation
- Comparative Inventory Analysis

Wall to Wall Service:

- Medical/Surgical Supplies
- Pharmaceuticals
- Assets
- Instruments
- Engineering/Plant Ops

Contact us at: 1-800-284-7690



Subscribe to
Hospital News

Hospital News provides readers with up-to-date information on our regional healthcare community.

Signature

Date

(SIGNATURE AND DATE REQUIRED FOR PROCESSING)

☐ One Year \$30 ☐ Two Years \$45 ☐ Three Years \$60

Name

Facility/Company

☐ Work ☐ Home Address

City

State

Zip

Phone

E-mail

Enclose payment with form. We accept Visa, Mastercard & American Express.

Make check payable to: HOSPITAL NEWS

Payment Method: ☐ Check ☐ VISA ☐ Mastercard ☐ American Express

If paying by credit card, please provide the following information:

Credit Card No.

Expiration Date

Cardholder Name and Billing Address

City

State

Zip

www.pghhospitalnews.com

e-mail: hdkart@aol.com

Questions? Call (412) 856-1954

Hospital News

Fax This Form to (412) 856-1955 OR MAIL TO: Hospital News, 4417 Old William Penn Highway #6, Monroeville, PA 15146

DATEBOOK:

Presented by

**PITTSBURGH
TRANSPORTATION
GROUP**

July 16

Jameson to Hold 15th Annual Golf Classic

Jameson Golf Classic to benefit The Children's Advocacy Center is planned for Monday, July 16, 2007, at the New Castle Country Club.

The event, sponsored by the Jameson Health Care Foundation has set a goal of raising \$100,000 to benefit The Children's Advocacy Center (CAC).

For more information, call (724) 656-4096.

August 13

Cancer Awareness Golf Scramble

Registration is under way for the UPMC Northwest Cancer Awareness Golf Scramble. UPMC Northwest Foundation will sponsor this benefit event at 10 a.m. on Monday, August 13, at Wanango Country Club. The event will feature a scramble format with four-player teams in men's, women's, and mixed (two women, two men) divisions. Proceeds will go to the UPMC Northwest Foundation Oncology Fund, which supports projects that benefit UPMC Northwest's cancer care services.

For more information, call Nancy Beichner in the UPMC Northwest Foundation office at (814) 676-7141.

October 2-4

Healthcare Facilities Symposium & Expo

The Healthcare Facilities Symposium & Expo is returning to the Windy City, Chicago, IL, for its 20th anniversary event! Don't miss the longest-running conference and exhibition focused on master planning, design & construction, evidence based design, sustainability, technology, guest services and operations in healthcare facilities. For more information, visit www.hcarefacilities.com or call (203) 371-6322.

October 26

2007 Annual Educational Symposium

Pennsylvania's Association for Long-Term Care Medicine presents the 2007 Annual Educational Symposium on Friday, October 26, at the Wyndham Gettysburg Hotel, 95 Presidential Circle, Gettysburg, PA. This is for long-term care health professionals including Geriatricians, Psychiatrists, Internists, Family Physicians, Nursing Home Administrators, Advanced Practitioners, Registered Nurses, Consultant Pharmacists, Therapists, Physical Medicine and Rehabilitation Professionals, and Social Workers.

For more information, visit www.pamda.org.

Send your submissions to hdkart@aol.com

No Butts About It, UPMC Smoke-Free Policy Is Leading The Way To A Healthier Community

On Sunday, July 1, the University of Pittsburgh Medical Center (UPMC) will institute a campus-wide clean air and smoke-free policy to protect patients, visitors and staff from the harmful health effects of secondhand smoke. The policy will prohibit smoking on any UPMC-owned or leased property, including its grounds, garages and parking lots.

"It is vitally important that people in our community are able to access UPMC facilities that are smoke-free and healthy," said Elizabeth Concordia, senior vice president, academic and community hospitals, UPMC, and president, UPMC Presbyterian Shadyside. "In the interest of the public's health, especially the well-being of those most vulnerable, our patients and children, we are taking action to set the standard for an environment that promotes good health."

Secondhand smoke is a proven health hazard, leading to heart disease, lung and other cancers, chronic lung disease and even premature death. Given these dangers, UPMC convened a task force in 2006 to put a smoke-free plan into place and developed tools to help ease the transition by assisting patients, visitors and staff members who want to quit smoking. In partnership with the UPMC Health Plan, UPMC is offering staff members and the community smoking cessation classes, counseling services and other resources. UPMC Health Plan also provides many members with coverage for medication to relieve the discomfort often experienced in the early stages of quitting.

"As the region's top health care organization, we believe that we need to set a healthy example," said Greg Peaslee, senior vice president, human resources, UPMC. "Allowing smoking on our campus, even in designated areas, is not consistent with that commitment."

The clean air and smoke-free policy pertains to all of UPMC's hospitals, offices and other facilities – more than 80 sites. Signs communicating the new policy are being installed to ensure awareness of the change, and count-down clocks have been in place for the last several months.

For more information on UPMC's clean air and smoke-free policy, call 1-800-533-UPMC (8762) or visit the Web site at www.upmc.com



The Marketplace

For advertising information, call (412) 856-1954 or e-mail hdkart@aol.com

Parkvale Bank

Great Rates, Friendly Service

Equal Housing
LENDER

www.parkvale.com

Member FDIC

Helen Green, Manager
Oakland Office
3520 Forbes Avenue
Pittsburgh, PA 15213
Phone: 412-687-1200

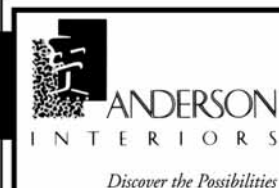
CARING HANDS SENIOR HEALTH CARE

- bath visits
- personal care
- sitters
- 24 hour companions
- home making
- hospital and nursing home care
- someone will always answer the telephone
- available 24 hours 7 days a week

Initial Assessment Free!
412-349-4633

"hands that will make a difference when it comes to in-home health care"

Ask about our
NO OVERTIME rate
on ALL HOLIDAYS

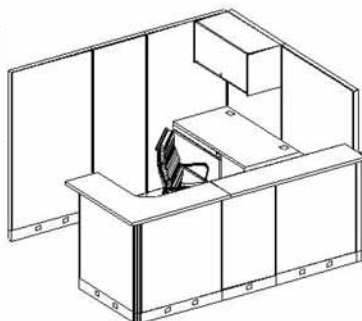


*Discover the
Possibilities*

Showroom
12 Plum Street • Verona, PA

- Remanufactured & New Workstations
- Executive Casegoods
- Conference Room Furniture
- Training Room Furniture
- Seating/Filing/Storage

www.ai-interiors.com • 412-828-7420 • Fax 412-828-3160



**Where The Holidays Are
Celebrated Everyday!**

353 Dixon Avenue
North Versailles, PA 15137
Tel: 412-824-8336

CAREER Opportunities

For advertising information,
call Margie Wilson at (412) 856-1954 or email hdkart@aol.com.

NURSE

WHILE CONTINUING THEIR
EDUCATION, OUR
NURSES GET A LOT:
RESPECT, SKILLS, PAYCHECKS.

Few nurses can say they have served their country while tending to their patients. Our nurses do every day. And our nurses are paid to get training in new and advanced medical areas. If you join the United States Air Force, you could receive up to \$26,000 for college and student loan repayments. You may also qualify for a \$5,000 sign-on bonus. To learn more about Air Force nursing, please visit airforce.com or call 1-800-423-USAF to request more information.



U.S. AIR FORCE
CROSS INTO THE BLUE

Move Your Career Onward and Upward!

Immediate Needs for RNs, LPNs, PTs, PTAs, OTs, COTAs, RTs and SLPs

Onward is a leading staffing provider for Western Pennsylvania and Eastern Ohio.
Discover the Onward Healthcare Advantage!

- Per Diem & Contract
- Flexible Scheduling
- Industry Leading Bonuses
- 401k with Employer Match
- Health & Dental Benefits
- Weekly Pay / Direct Deposit

Call Today for More Info!

P: (866) 226-1115 x2 • F: 866-715-7704
www.onwardhealthcare.com • pitt@onwardhealthcare.com



**American
Red Cross**

Career Opportunities

Greater Alleghenies Region Blood Services

Registered Nurses • Licensed Practical Nurses
Phlebotomists • Medical Technologists
and other related degrees and certifications
An Equal Opportunity Employer - M/F/D/V

Visit www.redcrosslife.org
or call (800) 542-5663, x2717 or x2722



**Lutheran
SeniorLife**

Come Join Our Team!



LIFE - BUTLER COUNTY

724-778-1100 • Fax: 724-778-0411
ebush@lutheranseniorlife.org

Certified Registered Nurse Practitioner (FT)
Perform physical assessments; develop/adjust plans of care; evaluate complaints; provide appropriate treatment and family teaching.
Transportation Coordinator (FT)
Responsible for ensuring the safe/efficient transportation of clients in a timely, competent manner in Butler County. High school diploma or GED; 3 yrs. exp. Must have valid PA driver's license and no driving infractions. Current CPR and First Aid training.
Recreation Coordinator (FT)
Plans, supervises/monitors recreational programs for elderly. Builds sense of community/ warm social atmosphere for clients. Bachelor's degree or equivalent. Min. 2 yrs. exp. social/recreational program, providing/coordinating services for frail/elderly populations.

Social Worker (FT)
Promotes/maintains the mental/social health of enrolled clients through assessment/treatment/teaching/counseling. Provides basic casework/counseling. Responsible for implementation of social work care plan/ coordination of social work with other services. MSW required.

Administrative Assistant (FT)
Supports administrative needs of center. Positive communication/interpersonal/customer service. Responsibilities include receptionist/customer service. Associate's degree or Business/Secretarial education preferred and 1 yr. related exp.

PASSAUNT RETIREMENT COMMUNITY

Zellendorf
724-663-6028 • Fax: 724-663-6010
rcp@lutheranseniorlife.org

Licensed Practical Nurse (FT, Casual)
3 p.m. - 11 p.m., 11 p.m. - 7 a.m. and Casual positions, all shifts; 1-2 years experience preferred and a current PA license. LEAP training and Gerontological certification available.

Certified Nurse Aide (FT, PT, Casual)
7 a.m. - 8 p.m., 8 p.m. - 11 p.m. and 11 p.m. - 7 a.m., plus Casual positions available in nursing and assisted living, all shifts. LEAP training and Gerontological certification available.

Non-Certified Caregiver (PT)
Positions available with varying hour requirements; weekend work required; experience helpful.

Activity Technicians (PT)
Work under broad supervision in a comprehensive multi-level recreation program. High school diploma or equivalent, 1-2 years related experience, good communication, planning and preparation skills. Weekend work required.

Nutritionist (Casual)
Responsible for teaching group nutrition classes as part of our Fitness and Wellness Program. Bachelor's Degree as Registered Dietitian with current PA license, current registration with American Dietetic Assoc., CPR/AED required and 1-2 years experience working with older adults preferred.

Dietary Assistant (PT)
Daylight positions; experience helpful. Hour requirements vary; weekend work required.

Housekeeping Aide (FT, PT, Casual)
Daylight positions available; experience helpful; weekend work required.

Maintenance Specialist (FT)
Install/replace, general maintenance, repairs on all major and minor utility systems. One year certificate from college or technical school or 6-8 months related experience and/or training or equivalent combination of education and experience. Valid driver's license required.

SENIOR PARTNERS

Butler and Butler Counties
724-778-4770 • Fax: 724-778-0411
shane@lutheranseniorlife.org

Registered Nurse/LPNs (Per Mail)
Nurses needed for home care. Requires a PA license. Certified Nursing Assistants (FT, PT, Casual) For home care division, must have current MA certification, experience in geriatric home care a plus. A current PA driver's license/reliable transportation required. Hours may vary.

Private Duty Services (Non-Medical)
Provide routine personal care and support to help seniors maintain their independence, including companionship and household tasks.

ST. JOHN SPECIALTY CARE CENTER

Marietta
724-628-4787 • Fax: 724-628-4866
stjohn@lutheranseniorlife.org

Registered Nurse/Licensed Practical Nurse (FT, PT, Per Diem) 1-2 years experience preferred and current PA license. Weekend program available. **Certified Nurse Aide (FT, PT, Per Diem)** MA certification required. 1-2 years experience preferred. Weekend program available. **Nurse Aide Trainee**

PAID training
Housekeeper (FT)
Experience preferred; but not necessary. **Dietary Assistants (FT & PT)** Experience preferred; but not necessary.

Dietary Coordinator (PT)
Evening hours (Monday - Friday)
Groomer (PT)
Part-time RD (Monday - Friday)

Respiratory Therapy (FT, PT, Casual)
Groundskeeper - Temporary (summer)

LIFE - Beaver County
Aliquippa
724-778-1100 • Fax: 724-778-0411
ebush@lutheranseniorlife.org

Program Assistant (FT/PT)
(Certified Nurse Aide) for center and in-home visits. Work every third weekend. Driver Assistant (FT) Must have valid PA driver's license and no driving infractions. (Monday-Friday.) Experience preferred.

1-800-641-7788
www.lutheranseniorlife.org
EOE • Drug-Free Employer

EXECUTIVE LIVING

Reach 36,000 decision makers in your regional market



Upper Saint Clair

\$549,000

Once in a lifetime opportunity – Now priced below appraised value. This 6 Bedroom classic contemporary is situated on over 1 acre of professionally landscaped gardens in Old Orchard Manor complete with a custom pool worthy of an Olympic medal. The new gourmet kitchen features stainless steel professional appliances, expansive cabinetry, granite counter tops and a walk-in size fireplace.

Jim Hadden • Keller Williams
412-551-3999 ext. 239
jimhadden@kellerwilliams.com



L. Strabane

\$229,900

Decorated Model Home custom built by Highland Homes is available for immediate occupancy! Outstanding features include 1st floor master bedroom suite with sumptuous bath, 9' ceilings, hardwood floors, granite & stainless steel kitchen, spacious 2nd floor & 2 car attached garage. Great location to South Hills in a maintenance free community with pool & clubhouse! One year health club membership included!

Ann Gendish • Keller Williams
724-841-6999 ext. 268
anngendish@kellerwilliams.com



L. Strabane

\$349,900

Welcome Home to luxury 1st floor & maintenance free living in North Scrabble Twp. This amazing home features over 3000 sq feet of living space & is in "turn key" condition, tastefully decorated in neutral tones throughout. From soaring 18' ceilings to the breathtaking view from the Trek deck to an incredible finished walk out game room, you will say "Wow" from beginning to end! Call Ann today for your personal tour.

Ann Gendish • Keller Williams
724-841-6999 ext. 268
anngendish@kellerwilliams.com



AVAILABLE HOME SITES

Bendleyville 28 acre Residential Site	\$229,000
Cecil 3 Home Site Parcel 8.06 Acres	\$249,000
Cecil 150 Home Site Parcel 159 Acres	\$249,000
Cecil 3.9 acre Home Site	\$129,000
Finley Twp. 90 Lot Residential Development	\$710,000
Kennedy Twp. 93 Acre Residential Dev.	\$1,200,000
Peters Twp. 4 Luxury Home Site 2 acres each	\$220,000 & Up
Peters Twp. 6.5 acre Estate Home Site	\$700,000
Peters Twp. 8.5 acre Estate Home Site	\$150,000
Rail Creek 71 acre Residential Site	\$230,000
Sewickley Heights Manor Home Site 4.83 Acres	\$159,000
S. Strabane 6 Residential Home Sites	\$22,200 & Up
Upper St. Clair Residential Home Site	\$90,000

Karen Marshall • Keller Williams
412-551-3999 ext. 129
karenmarshall@kellerwilliams.com

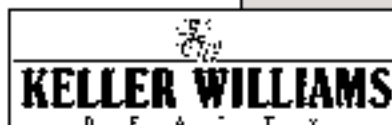


Peters Twp.

\$1,000,000

Designers Showcase – Too Many Amenities to Mention! This 5 Bedroom custom home has everything you deserve in one beautiful package. The custom details are evident from the front doors to the spa pool with fountains and waterfalls including the Gourmet Kitchen, First floor Spa like Master Suite, Cherry detailed Office, Unbelievable Home Theatre, Gracious Gym and Spacious Wine Cellar.

Jim Hadden • Keller Williams • 412-551-3999 ext. 239
jimhadden@kellerwilliams.com



APARTMENTS/TOWNHOMES

GO BEYOND THE ORDINARY!



GRANDVIEW POINTE
Apartments

- *Luxury 1 & 2 Bedroom Apartment Homes
- *Green Close Space Plus Extra Storage
- *Plush Wall to Wall Carpet
- *Fully Equipped Designer Kitchen
- *Spacious Fitness Center
- *Social Room for Entertaining
- *Laundry Facilities & Indoor Parking
- *DSL/High Speed Internet Available
- *Visual Inspection Entry System
- *On-Site 24 Hour Emergency Maintenance
- *Transportation to Entrance
- *Breathtaking Views with a Prestigious Address
- *1 Star Restaurant-Monterey Bay Fish Grotto

SUNNY DAY SPECIALS!

- \$99 Security Deposit
- 1 Bedroom starting at \$908
- 2 Bedroom starting at \$1156

Call today!!

1411 Grandview Avenue • Pittsburgh, PA 15211 • 412-481-1112
www.grandviewpointe.com

Maxon Towers

—this is luxury living

Contact for an appointment
6315 Forbes Avenue
Pittsburgh, Pennsylvania
crn@prudentialrealty.com
412.521.7900

Alvern Gardens

CASTLE SHANNON

1, 2, 3 Bedroom Apts from \$540

1000 Vermont Ave.
412-563-RENT
412-561-4663



Prudential
Real Estate Services, Inc.

- 24hr Emergency Maintenance
- New Windows
- Remodeled Kitchen
- Laundry Facilities
- Wall to Wall Carpet
- Extra Storage
- Covered Parking Available
- Keystone Oaks School District
- 1% wage tax
- Close to Trolley
- Swimming Pool



Prudential

Preferred Realty

Independently Owned And Operated.

Preferred NEW CONSTRUCTION

For open hours and home & lot availability, visit:
www.PrudentialPreferredRealty.com

CITY



South Side

**One-of-a-Kind
Town Homes & Lofts**



From Downtown: 10th St. Bridge to L Muriel St, to corner of 15th St.

Unique Enclave Design

- 3 town home & 2 loft style condominiums
- Spacious open floor plan with 2,800 - 3,300 sq. ft.
- Large master suite
- 2 - 3 bedrooms + den/office
- 2-1/2 baths
- Heated courtyard parking
- Terraces + balconies, or sky room + deck
- Priced from \$497,500

Call 412-488-0347
or 412-833-7700
Barbara Kurdys Miller x239
Frank Conroy x235

**Only 2
Remain**

EAST

new falls village

**New Townhomes in
Plum Borough**

- Ready for immediate occupancy
- Starting from \$255,000
- 3 bedrooms, minimum 2-1/2 baths
- Manor House kitchen with island & pantry
- Convenient first floor laundry
- Heated community pool & pavilion

Jason Griffiths
412-372-1050 x375



Built by William & Clois Fears

Dir: Parkway East to Rt. 22E (towards Murrysville),
right Rt. 286 (Golden Mile Hwy.), left New Texas
Rd. (Burger King), left Falls Village.

SOUTH

**View Six
Custom-Built Models**

- Outstanding Craftsmanship by the Area's Finest Custom Builders
- Single family homes from \$375,000
- Carriage Homes from \$285,000
- Villas from \$300,000
- Villas and Carriage Homes offer maintenance-free living

Barbara Baker or Bob Main:
412-833-7700 • www.Summerbrooke.us

Dir: Rt. 19S., L. Galley Rd. (at King's Restaurant),
R. Gala Dr. into Summerbrooke.



NORTH STRABANE TOWNSHIP



NORTH

Beautiful Wooded Splendor & Nature Abounds



- Two models available
- Ideal Franklin Park location
- North Allegheny Schools
- 1 to 4+ acre treed home sites
- Home/lot packages from \$600,000
- Custom homes by Sosso Builders, Inc. and Brennan Builders, Inc.
- Home sites selling fast!

To visit: Take I-79 North, Wexford Exit,
L Rt. 910 (Orange Belt) follow to stop sign, L
Rochester Rd. to Castletown on L.



READY NOW!

Lot 18 by Sosso Builders, Inc. \$870,000

412-367-8000
Bob Lancia x276 or Sheryl Florio x243

NORTH

A great deal is now even better!

Prices now start from just \$200,000

- All first floor master suites!
- 6 acres of green space to rear
- Great floor plan with large loft
- 2-car attached garage
- Low maintenance exterior
- Private rear yard

Teresa Huhn
(412) 367-8000 x294

Dir: Rt. 19N from Pittsburgh, left on
Ingomar, left on Harmony to end.



Town of McCandless

Harmony
POINTE



We have everything you're looking for!

One-Year Golf Membership Included!

- Maintenance-free lifestyle
- Golf course community, Deer Run Golf Course
- Community nestled on 40 acres
- Community clubhouse, pool, tennis court, & bocce court

Site Office: 724-265-4200
Nancy Keilly or Alice Benton:
412-487-8008
Whit Braham: 412-782-3700

Carriage Homes from
\$199,900 - 2 bedroom
\$239,900 - 3 bedroom



Dir: Rt. 8, Red Belt (East) 2.9 miles to right on
Monier Road, right on Links Way.

**New Townhomes in Wexford
from the \$180s**

BUILDER PAYS BUYER CLOSING COSTS!*

*Ask agent for details.

- Three bedrooms, 2-1/2 baths
- Second floor laundry
- Finished game room
- 2-car garage
- Elevators available
- Community center and heated pool
NOW OPEN!

(724) 776-3686
Linda David x224 Pat Wyman x256



Dir: Rt. 19 in Wexford, go West onto Richard Rd.
(behind McDonald's), right into Forest Oaks.

www.TheFieldsofNicholson.com



Built by Award-Winning
Signature Homes

Luxury

Villas from \$384,900
Carriage Homes from \$499,900
Villas and Carriage Homes
Offer One Level Living

- Maintenance-free lifestyle
- Franklin Park Borough
- North Allegheny School District
- Minutes to downtown and the airport
- Club house & pool - NOW OPEN!

Barb Averell: 412-364-2690 or 412-367-8000

Dir: I-79N to the Wexford Exit, L Wexford Bayne Rd.
(Rt. 910), L Nicholson Rd. - 1 mile South.

EXECUTIVE LIVING



403 QUAKER ROAD

This beautiful Serenbe home has anchored the neighborhood for 100 years. It sits on 2 lots, directly across from

a 4 acre park, on the corner of Quaker and Meadow. Edgeworth Elementary, the Village and the Academy are a short walk away. SBR, SBA with an additional finished 3rd floor, make great space for an office or playroom. A sleeping porch off of the 2nd floor could easily become a studio/office. Hardwood floors throughout have always been covered with carpet. Move in immediately & decorate at your own pace. Best value in town!

RE/MAX Select Realty

Carol DiLotto 724-993-6900 x265 • cdiotto@remax.net



FRIENDSHIP AREA 328 West Penn Place \$137,000

Great location. Walk to West Penn, Shadyside, and New Children's Hospital, plus Bloomfield and Shadyside. Newer windows. Quiet cul-de-sac street. Front porch, small back yard. MLS# 657800

FRANKLIN PARK 1340 Willow Oak \$529,000

Doctor's delight, easy 25 minute commute to all hospitals! 4 BR, 4.5 baths. Treed lot. Many great options. Finished lower level. Move in condition. Super buy in Grey Oak! MLS# 662005



Joe Larkin

RE/MAX Select Realty
724-933-8300, ext. 258
412-890-0625

JLarkin@comcast.net
Howl@comcast.net

Adams Township \$264,900 MLS# 678491

The classically detailed, light-filled spaces of this 3 bedroom, 2 full & 2 half bath townhouse include island kitchen with granite countertops/stainless appliances, spacious family room with fireplace, walk-out lower level, 9' ceilings, ceramic tile flooring, Tiffany chandeliers and more. Convenient location in Heritage Creek and upgrades beyond the norm add to this fabulous townhouse's appeal!

Gloria Carroll/Patty Pellegrini 412-367-8000 x242/232



Adams Township \$425,000 MLS# 677663

The artistry of this 4 bedroom, 3.5 bath design is unique, the space abundant. Features include island kitchen with breakfast nook, private study with arched bookcases, finished lower level with full bath and new carpeting. Ideal cul-de-sac location and touch more. Must see interior!! Aesthetically beautiful, financially smart, this fantastic home is the best value in Fox Chase at Tredahale!

Gloria Carroll/Patty Pellegrini 412-367-8000 x242/232



Franklin Park \$349,000 MLS# 679129

Experience pure delight when you enter this character-filled 4 bedroom, 2.5 bath Tudor design located in Huntington Woods. Highlights include recently remodeled cherry KIT with granite countertops & dining/sunroom with abundance of windows, built-ins in sandy stone fireplace in family room, large 2nd floor laundry, finished walk-out lower level, fenced yard and much more!

Gloria Carroll 412-367-8000 x242



For more information, tour or brochure... Call Today or Visit Our Website at www.prudentialpreferred.com for a virtual tour.

Gloria Carroll (412) 367-8000 ext. 242

Ruth Brown (412) 367-8000 ext. 239 Patty Pellegrini (412) 367-8000 ext. 232



Prudential

Preferred Realty

Fine Township \$1,195,000

Elegantly appointed & distinctly designed home in the choice neighborhood of

The Heights of North Park. An exquisite exterior boasts brick with limestone trim, governor's drive & immaculate landscaping on over 2 acres of land. Inside, a stunning floor plan flows and welcomes entertaining. Noteworthy features include 2nd & 3rd floor foyer with wedding staircase, gourmet kitchen, huge family room with wet bar & additional hot tub room. Outdoor boasts a 4 car garage and rear patio with beautiful view!

Virtual Tour at www.HoneywillTeam.com
Call Linda Honeywill 412-367-8000 x237



Cranberry \$399,999

Touping colonial set on a beautiful lot in Cranberry! Spacious home boasts a great floor plan. Highlights

include vaulted den with jigsaw paneling, formal living room & tray dining room. Flow into an island kitchen & a 2 story family room with cathedral ceiling & floor to ceiling fireplace. A finished lower level offers full bath, 14X14 area & additional 12X10 area that could be used as a 5th bedroom or bonus room. Room to roam is found outside with an incredible level, fenced yard! Perfect for any family!

Virtual Tour at www.HoneywillTeam.com
Call Linda Honeywill 412-367-8000 x237



Fine Township \$474,999

Engaging & well-located property, located in prestigious Tredahale Golf Community!

Space feels endless when entering into the 2 story foyer. Flow into a den offering wainscoting, tray dining room, functional kitchen & unbelievable 2 story family room. A bright sunroom sits off of the family room & overlooks the large patio & level, rear yard! Luxurious master bedroom has double tray ceiling and built-in master bath with whirlpool. Explore all the possibilities of this incredible residence!

Virtual Tour at www.HoneywillTeam.com
Call Linda Honeywill 412-367-8000 x237



Fine Township \$372,999

Series, private surroundings in the well-established neighborhood of Karrington woods!

Recently added Red Oak hardwood floors grace the entire first level! Incomparable highlights of this home include formal living room, tray dining room & lower level game room with den & bar. Beautifully designed family room boasts cathedral ceiling & library loft! An extremely private backyard offers stone patios, gazebo & level wooded area. Home won 'Best of Show'!

Virtual Tour at www.HoneywillTeam.com
Call Linda Honeywill 412-367-8000 x237



Fine Township \$324,999

Indulgent living with a comfortable feel! Expertly built Spacious home with 4 BR and 4.5 BA in Lake

MacLeod! Custom features begin include 1 story foyer, den with wall of built-ins, hardwood dining room & breakfast pantry. Large Cherry kitchen boasts gourmet stainless steel appliances & granite counters. A 2 story great room is adorned with window walls, a tray master includes 11x8 sitting area & a sumptuous master bath beckons luxury! Completely finished lower level provides additional fireplace & wet bar area.

Virtual Tour at www.HoneywillTeam.com
Call Linda Honeywill 412-367-8000 x237



Fine Township \$292,500

A perfect blend of comfortable living, premier location & affordable price! This colonial boasts 4 bed-

rooms, 2.5 bath-rooms & all the advantages of living in Tredahale Golf Community! A bright interior has dining room with chair rail, living room with crown molding & large, island kitchen opening to a comfortable family room. A nice sized master invokes relaxation while a finished lower level offers built-in bookcases and leather carpet. Walk-out from the kitchen onto a beautiful rear deck!

Virtual Tour at www.HoneywillTeam.com
Call Linda Honeywill 412-367-8000 x237



"Whether you're buying or selling, it's easier to accomplish your real estate objectives if you have a team working for you."

"LET THE HONEYWILL TEAM WORK FOR YOU!"

Linda Honeywill, Associate Broker 412-367-8000 x237

Linda@HoneywillTeam.com www.HoneywillTeam.com



Prudential
Preferred Realty

Avonworth Heights \$460,000
877 Three Line Court

Only 10 minutes to AGH - 15 minutes to Oakland. You will not only enjoy the convenient location, but the quality of this custom built provincial & stable home and quality gourmet kitchen, the screen TV with surround sound and a professionally landscaped exterior are only a few of the amenities you will come to love.

Enjoy the view of our neighborhood. Call 412-996-7761 and call me for your private showing.

Terry Lloyd
Howard Hanna Real Estate Services
412-996-7761
tlloyd@hennet.com

Howard Hanna
Real Estate Services

Grand Condominiums in Pittsburgh's Prime Location
Chateau Tower 3,500 sq ft of Estate of World Renowned Interior Designer
MARK CHERRY

Across from New Development Plans of the Union Arena.

A Unique Home & Investment Opportunity for \$328,000.
Call Susan McCaffrey for appointment
412-887-8000 x222

Howard Hanna
Real Estate Services

Private Cate House
Slippery Rock Bldg.
\$1,100,000

52 Bed Facility on 2 lots (1.65 acres). Cedar sided home with brick 1st floor 4816 sq.ft., basement level 4912 finished sq.ft. with 504 sq.ft. utility area. 100 sq.ft. office space.

For details call Ed.

Ed Mattoon
Northwood Realty Service
724-262-1313 ext. 256
www.edmattoon@northwood.com

Northwood Realty Service

Lovely Home in Wilkins Township
1 Thomas Lane, Wilkins Township, PA 15248
\$449,900

Unique custom built 2-story, 3.5 bath home nestled in a beautiful wooded area in desirable Wilkins Township Community. This home is perfect for anyone who enjoys peaceful living. Spacious, airy, and warm you will love this magnificent home. A stone fireplace is the cozy spot of the living room. Large dining room is suitable for entertaining, with all day glass door that leads to outdoor patio with 5 skylights. Master bedroom has a private balcony. Large kitchen has island and eating area. How owner will enjoy more than 3,000 sq. ft. of space in this impressive home. You will never run out of storage space with the large finished basement. Spacious private backyard, two terraces and two water features.

Olga Dubrovsky
Coldwell Banker Real Estate Inc.
724-927-0129
olga.dubrovsky@coldwellbanker.com

Coldwell Banker
REAL ESTATE, INC.

Fox Chapel Home Condominiums
Convenient condo living-Fox Chapel Rd. at Rt. 28; one minute to Highland Park Bridge! Sophisticated 3 bdrm. w/ parquet, built-ins, private views & balcony, great storage, laundry in unit, indoor pool & parking, gym, garden, walking trail, receptionist, walk to shops. A great value.
\$279,000

Fox Chapel Perfection
Move-in top notch condition on private lot w/ 2 patios on executive cul de sac right off Fox Chapel Rd. New eat-in stainless-steel granite kitchen w/ all bells & whistles opens to family rm., wet bar, garage, patio. There are 6 new glass baths, den w/ fireplace, media rm. and gorgeous entertaining living & dining rms (living rm. has cathedral ceiling, hidden wet bar and access to rhododendron rug patio, huge dining rm. has bowed window & fireplace). Master has cathedral ceiling, fireplace, walk-in closet and new bath. There are great closets and hardwood floors throughout, 2 back stairs, 3 car gar., slate roof and 2 new furnaces. Wow!

Janey Polach, Coldwell Banker, (412) 781-8929, 521-627-271

HAMPTON WOODLANDS - HAMPTON TOWNSHIP NEW CONSTRUCTION
Traditional neighborhood featuring a tree lined street, sidewalks and street lights. Acres of surrounding woods have been left intact and designated as conservation space to preserve wildlife. The homes offer 10 foot high ceilings, raised HVAC, structured wiring, front porches and courtyards, discrete rear garages, isolated bonus rooms and many other optional features. Green building materials and strategies mean the homes will be less costly to maintain. Come see these state-of-the-art, energy efficient, sustainable homes built by award winning Montgomery & Riet, Inc. Packages from \$419,500.

PENN TOWNSHIP - BUTLER COUNTRY CLUB AND AIRPORT
Five bedrooms and bathrooms all brick Contemporary w/ generous driveway on white top level & double 3.5 acres across from the 6th fairway. Open floor plan & design with soaring ceilings, ball-wy library, enormous light producing windows w/ breathtaking views, Italian marble, several wet bars, a swimming master bedroom suite w/ steam shower, completely finished lower level w/ 2nd family room, exercise area, 6-12 person areas, climate controlled cedar closets, possible in-law suite and many other exceptional amenities you simply won't see!

CYNTHIA HOWAN • COLDWELL BANKER REAL ESTATE, INC.
Office: 412-487-0300 x213 • Mobile: 412-593-5211 (7333) • www.pittsburghhousesales.com

Coldwell Banker
PREMIER REALTY

PETERS TOWNSHIP \$669,900

Captivating 2 story white brick w/5 bedrooms & 4 and 1/2 baths. State-of-the-art kitchen with adjoining breakfast area, overlooks large deck & landscaped grounds. Dramatic formal LR & DR with elegant pillars. Newly finished lower level Media/game room with custom built bar, bath and private bedroom. Attached 3 car garage. Great for entertaining!

Mary Jane & Tom Jurek
Leighton (Tom) Smith, II
Keller Williams Realty
412-331-3890 x106/180
412-609-3300 • 412-977-0589

Keller Williams Realty

Incredible Sewickley Victorian
535 Chadwick St • \$479,900

Freedom Traditional Elegance that is warm and inviting with original woodwork. GORGEOUS pocket doors, 4 fireplaces, professionally landscaped great grounds and an updated gourmet kitchen, complete with stainless appliances. Enjoy your peaceful, mature trees, regal dining room and updated master suite w/ the WOVEN fabric of this lovely home.

Call Lori Blance for details, 724-513-7044 or a private tour!

Lori Blance, RE/MAX Renaissance Realty West
724-513-7044 • lori@lancewest.com

RE/MAX Renaissance Realty West

Shadyside
213 Emerson Street. Renovated Right. Gourmet Chef's Maple Kitchen w/SS appliances. Front Covered Slate tile Porch. Deck. Fenced level backyard. 1st fl laundry. New furnace, ac, waterworks, electric service & siding. New bamboo floors, updated baths, finished attic 3-4 BR, 2.5 Baths, 2 car detached garage. Move Right In! \$320k - Open House 6/24 1-4pm

Call For a Private Showing Today!
CATHY WANSERSEKI • Remax New Horizons
412-669-6906 • www.cathywansersekirealestate.com
cathyw@att.net

Remax New Horizons

This space reserved for you.

Reach over 30,000 healthcare professionals every month.

Heights of North Park \$967,000

Fabulous 5 bedrooms, 5+1/2 bath home surrounded by 2.5 private, wooded acres in desirable Pine Twp. Beautiful craftsmanship evident throughout starting w/ gourmet kitchen, 2 story great room w/ walls of windows & executive style den. Add in 1st floor master w/ hot bath, huge finished lower level & 4 car attached garage. You're going to love this home!

Jane Stal
Coldwell Banker Real Estate
412-953-4642
janestall@pittsburghhomes.com

Coldwell Banker
PREMIER REALTY

\$595,000 VT670211

Separately renovated through an architecturally exciting 6 bedroom, 2.5 bath brick home in heart of Aspleywell. Amazing stone, cedar lined hardwood floors, stained glass, 5 fireplaces, woodwork, dual staircases, private back yard.

Jane Horrocks
Fox Chapel Office
412-742-8700x228-office
412-410-0682-cell

Prudential Preferred Realty

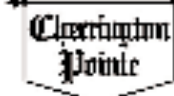
EXECUTIVE LIVING



Lot \$88 - \$829,000
Great Executive
Community in
Altoona Township
 Only 3 Bedrooms
 home still remain.
 Spectacular new
 Model.
 Packages from \$575,000 +.

To schedule an appointment, please call **Michael McElroy** or **Julian Pappas** at
(412) 262-5500

Cherryton Parkway West to Monroe Pk Exit, right on Monroe Pk Road, left onto Esper
 Crude Road, left at Cherryton Gate.



Custom not Developed
 by Wm. A. Martin & Sons, Inc.



Beaver County BLACKHAWK SCHOOLS \$887,000

Ascentia on Detail

50+ acres - only 10 minutes from PA turnpike
 and Rt. 60 - this beautifully constructed 6 year
 young stone home is located in a truly Sylvan
 setting. The versatile floor plan offers three levels
 of living space accessible to the gorgeous wooded
 yard. The gentle rolling acreage features
 fish ponds, wooded walking paths and meadows.



Donna Fisher
Howard Hanna
724-774-5590



MOON TOWNSHIP

2302 Myrtle Drive

Traditional elegance with today's amenities,
 this recently constructed custom design is
 reminiscent of a grand European estate.
 This provincial home is truly a show piece
 of exemplary design on nearly two acres.

It shows a unique and rare location with only one other executive home. A two story entry is highlighted by a
 sweeping curved staircase leading to a lavish master suite and dining room with a bridge opening to five other
 suites and bedrooms. In addition to a formal parlor and dining room with coffered ceilings as well as a two
 story great room, the first floor boasts a guest suite, fully finished study with fireplace, enormous sunroom cor-
 nered used as a luxurious wood-paneled area, gourmet kitchen with multiple dishwashers and refrigerators, new-filled
 breakfast room, wet bar, back staircase and mud room with custom wood lockers. Dressing throughout includes
 crystal chandeliers, elaborate crown molding, tray and coffered ceilings, built-in headboarded cabinetry, floor
 fireplaces, imported porcelain tile and granite. A formal governor's drive provides over the magnificent front
 entry and also serves the four car garage. Professional landscaping and pools and services surround the home
 creating a gracious welcome to all who visit. Please call for a private tour.



MARIE MCBRIDE
412-262-5500



1.2 Acres in Sewickley Heights

2 Audubon Drive - \$469,800

This unique renovated colonial home is the
 perfect place to relax. It offers 9' ceilings,
 dark flooring, French doors, dovetail call-
 ing bookcases, living area / gas fireplace,
 equipped kitchen, bathroom enclosed in win-
 dows plus 1st floor bedroom with bath. This
 open floor plan has an open staircase to the 1st master bedroom with full bath,
 dining area, skylight and built-in. An additional feature is the newer double
 garage with finished studio / exercise room or den. Call for an appointment.



GOLDWELL BANKER
AMPORT
412-264-1900 x 223
JACOB BERNETT
jacob@jacob.com



Distinctive One Level Detached Villas

*A Hop ... Skip ... and a Jump from
 Weirton, Steubenville and Downtown Pittsburgh!*



- * Upscale Single Family Detached Villas
- * Luxurious Ranch or Two Story Models
- * Optional Basement
- * Community Clubhouse
- * Maintenance Free Community
- * Country Setting

* Minutes From Pittsburgh International
 Airport and Downtown Pittsburgh

* Prices Starting At \$190,000.00
 * Three Models To Preview

* Directions: 3 1/2 miles West on 22/30 to
 the Imperial Exit. Turn right off the exit
 and left at the light on Old Steubenville
 Pike. Turn left on Pottothridge and another
 left on Donaldson to the community.

412-787-8807
www.PayetteFarms.com



Whether you are looking for a
 new office or a new home,
 Hospital News classifieds are your
 best bet. We deliver your message
 to a highly targeted, affluent and
 powerful readership, including:

- Health Care Administrators
- Hospital Department Heads
- Physicians
- Nurse Executives
- Marketing & Business
- Development Directors

*If you would like a media kit,
 contact our Advertising Department
 at (412)856-1954 or
 e-mail hdkart@aol.com.*

**From the
Doorstep**

**of Delicious Delicacies &
Delights to a
Spectacular
City-Surround of
Your New
Breathtaking Life...**

The contemporary condominium conveniences
of our sensational living spaces are waiting to
address the possibilities of your perfect place!

**Come See
What The BUZZ Is All About!**
Join Us for the New Model Grand Opening
Thursday Evening, July 19th
6:00 - 7:00 PM and
Fri, Sat & Sun, July 20th, 21st & 22nd
12:00 - 6:00 PM



Possibility #101: With everything exhausting your "to-do" list, it's time to streamline the system and enjoy the day-to-day necessities at your fingertips. Drop off the dry-cleaning and go for a grocery or two, stop and hop on over to the bank and finish fresh at the florist, it's all right here for you. Now, make your trek - just upstairs - to enjoy the comforts of your kitchen, where the take-out culinary cuisine can be your mid-day fare while a new divine dinner creation is yours to prepare. You will have precious time to spare - everywhere! **Experience life here...**

LOCATION:

At Negley & Centre thru Market District lot to main entrance

OPEN:

Tue, Wed, Thur 2-7 PM, Fri, Sat & Sun 12-6 PM or by appt.

Starting at \$328,900



**MARKET
HOUSE**

Condominium Living in Shadyside

Exclusively Marketed By:



Real Estate Mortgage Title Insurance

412-683-1980

www.howardhannan.com

www.markethousecondos.com



What makes **MANORCARE** different...

"I don't think I could have made it if it wasn't for ManorCare."

Ally had struggled with several medical issues, including pneumonia, in January 2007, which left her confused and deconditioned. Clinical services, therapy staff and other disciplines assessed Ally's condition and determined the best treatment plan to get her up and moving again. Ally began rigorous sessions with physical and occupational therapies. As Ally gazed around the therapy gym at the other patients participating in their exercises, she remembered saying to herself, "I know I have a second chance." When she had started her physical therapy treatments, Ally was only walking about 30 feet with assistance. By the end of her rehabilitation course, Ally was walking more than 200 feet on her own and able to do all of her own dressing, grooming and bathing. She was no longer using the feeding tube and was eating regular foods. She was finally ready to return home to her family, friends and her three beloved cats. Ally credits her recovery to the tireless support of her family and the exceptional care provided by ManorCare North Hills. Ally summed up her feelings when she said, "I don't think I could have made it if it wasn't for ManorCare!"



Rachelle Arnold, Speech Therapist
Eddie Nassan and Ally Caldwell-Nassan
Diane O'Reilly, Physical Therapist

HCR Manor Care specializes in providing post-acute nursing and rehabilitation services including physical, occupational and speech therapies, bridging the gap between hospital and home for patients.

Discharge planning home begins on the day of admission for our patients. The interdisciplinary team works with our patients and families to transition them home as safely and quickly as possible.

You don't have to take our word for it.

Ask the people who matter the most – our patients and their families.

HCR·ManorCare®
— Heartland • ManorCare —

For more information call:

HCR Manor Care
9 locations in Allegheny &
Washington Counties

412-498-9375

WE ACCEPT ALL PAYERS — MEDICARE, MEDICAID, INSURANCE, PRIVATE, HOSPICE